

Attachment B
Dining Facilities Floor Plans

Seating Capacities:

West Valley College campus:

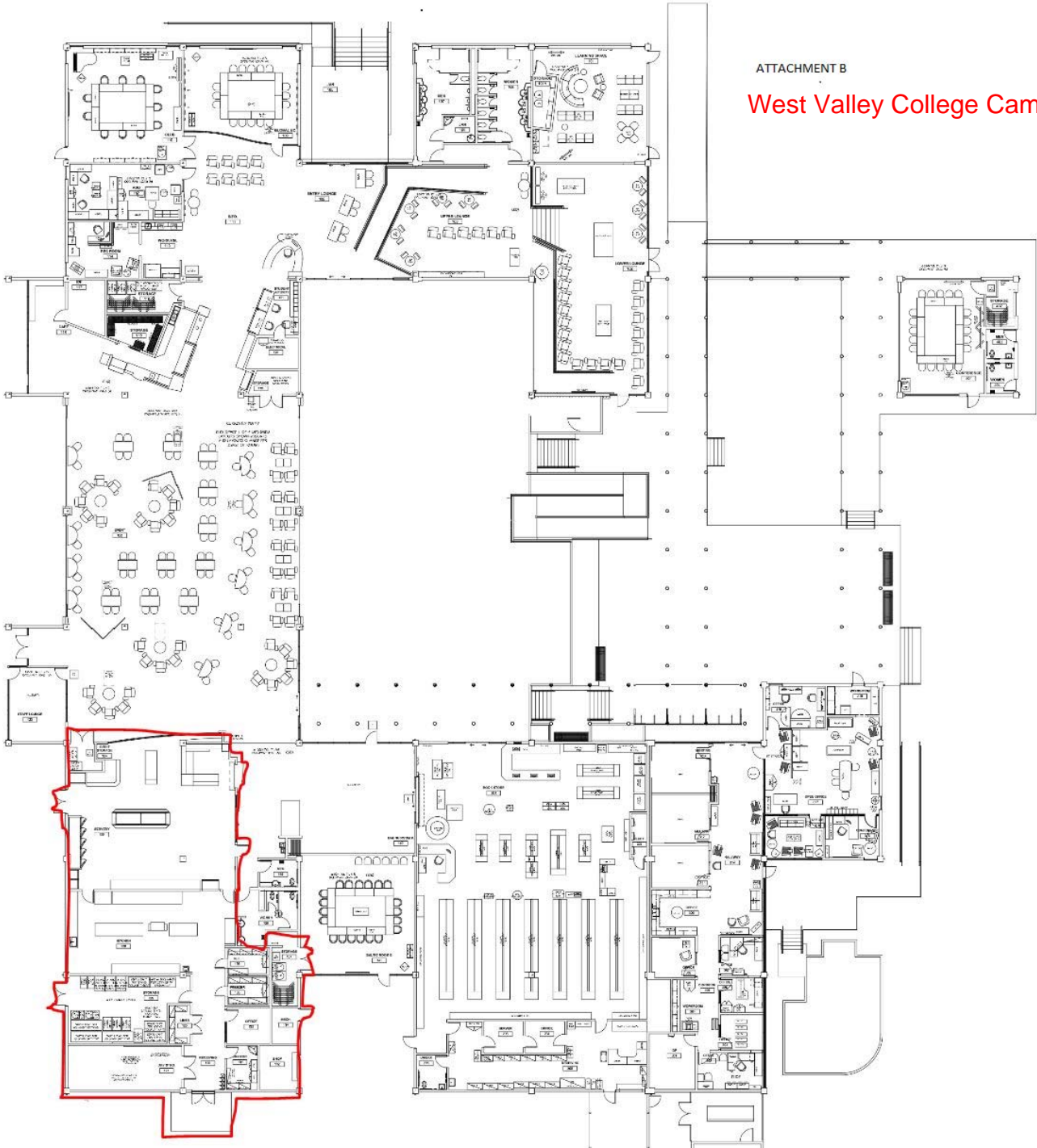
- Campus Center Café, currently known as WM Café: 171 seats.
- Coffee bar in the Campus Center: Seating is shared with the WM Café.
- Learning Resource Center (library) coffee bar (opening in spring 2026): Final seating is to be determined.

Mission College campus:

- Saints Café in the Campus Center: 176 seats.
- Coffee bar in the Student Engagement Center: 30 seats.
- Coffee bar in the Gilmor Center: No dedicated seating (primarily a grab n' go location).

ATTACHMENT B

West Valley College Campus Center



FLOOR PLAN SHEET NOTES

- A. ALL EXISTING GRID LINE DIMENSIONS TO BE V.P.
- B. PROJECT ELEVATION +0'-00" SET TO ASSUMED EXISTING SLAB ELEVATION OF +379.92' ON SURVEY, V.P.
- C. FURNITURE SHOWN FOR REFERENCE ONLY.
- D. SEE CASEWORK & SHELVING PLANS A250 - A253 FOR SHELVING AND CASEWORK LOCATIONS
- E. SEE FINISH PLANS A230 - A233 FOR FINISH TYPES AND LOCATIONS
- F. SEE CODE PLAN G101 FOR SIGNAGE INFORMATION
- G. SEE CODE PLAN G101 FOR FIRE RATING REQUIREMENTS Δ AD1
- H. REPAIR / PATCH (E) SPRAY ON FIRE PROOFING, THAT HAS BEEN DISTURBED AS PART OF DEMOLITION WORK OR CONSTRUCTION WORK PER FIRE PROOFING SCHEDULE BELOW.

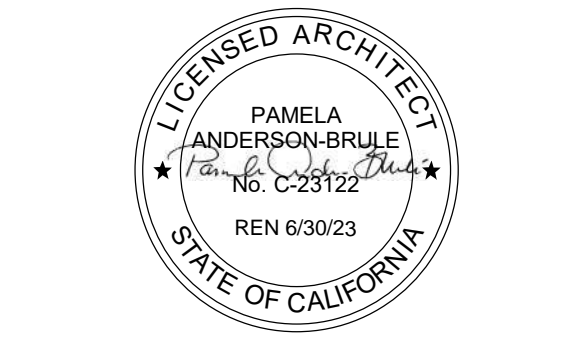


ANDERSON BRULÉ ARCHITECTS

325 South First Street, 4th Floor
 San Jose, California 95113
 408.298.1885 | www.aba-arch.com



CONSULTANTS LOGO



| NO. | DATE | REVISIONS |
|-----|------------|-----------------|
| AD1 | 02/10/22 | REVISED BID SET |
| 4 | 08/05/2022 | ADDENDUM 4 |

PROJECT TITLE:

WVC LRC RENOVATION
 14000 FRUITVALE AVENUE
 SARATOGA, CA 95070

PROJECT NO. 19-0703-0
 DATE: 08/12/2022
 SHEET TITLE:

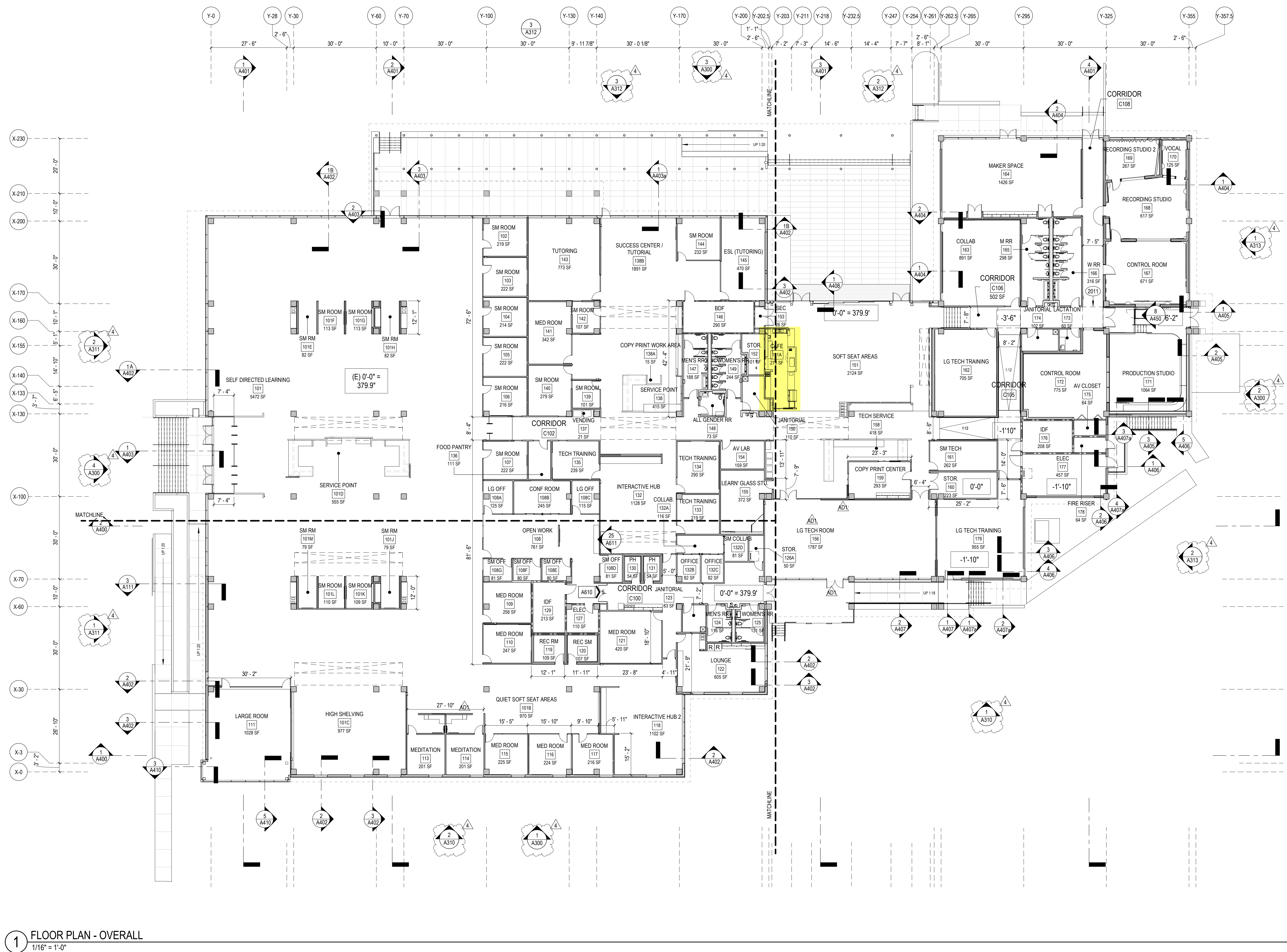
FLOOR PLAN - OVERALL

SCALE: As indicated

All drawings and written material appearing herein constitute original and unpublished work of Anderson-Brulé Architects and may not be distributed without the written consent of Anderson-Brulé Architects.

A200

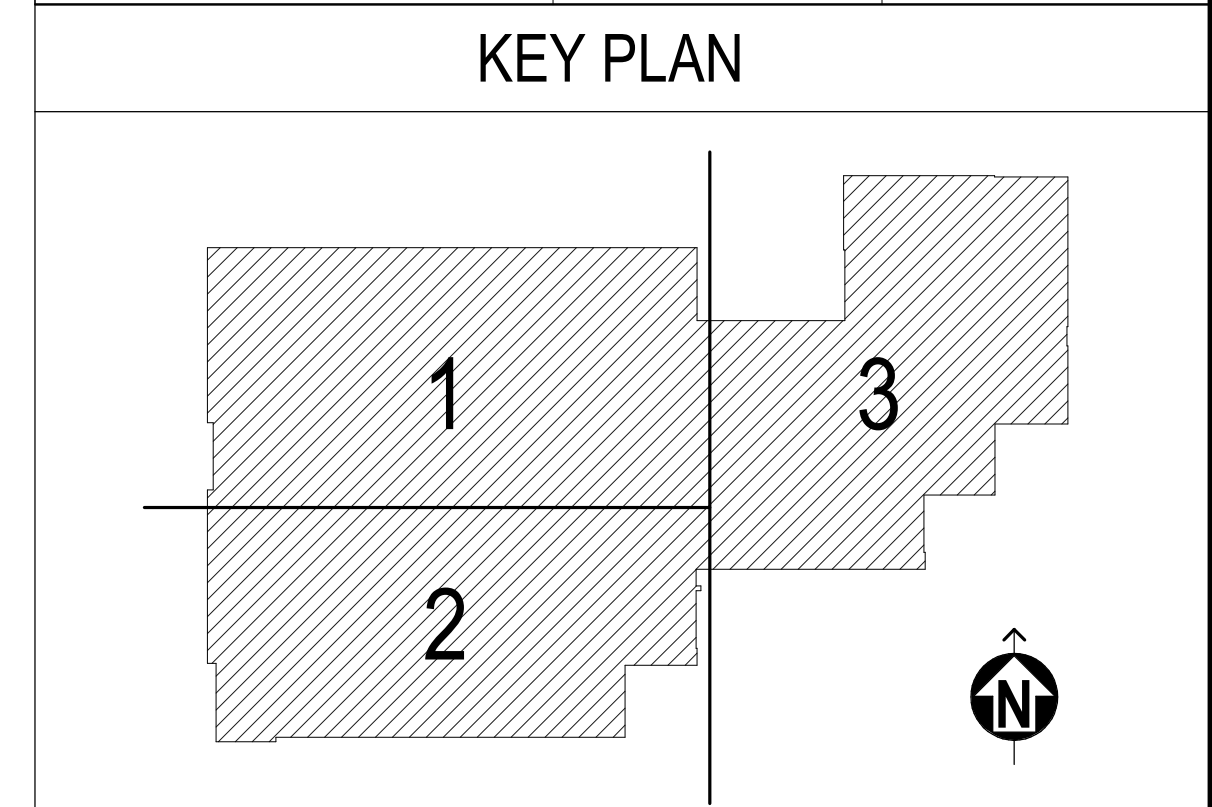
DSA APPROVED CONFORMING SET 10/21/2022



1 FLOOR PLAN - OVERALL
 1/16" = 1'-0"

FIREPROOFING SCHEDULE

| PROTECTED ITEM | UL LISTING - SAFP | UL LISTING - IFRM |
|--------------------------------------|-------------------|-------------------|
| 1. TUBE STEEL BEAMS 1-HR | - | UL# Y634 |
| 2. TUBE STEEL BEAMS 1.5-HR (TOWERS) | - | UL# Y634 |
| 3. TUBE STEEL COLUMNS 1-HR | - | UL# Y634 |
| 4. TUBE STEEL COLUMNS 1.5HR (TOWERS) | - | UL# Y634 |
| 5. PRIMARY & SECONDARY ROOF BEAMS | UL# S750 | |
| 6. ROOF ASSEMBLY (1 & 1.5 HR) | UL# P732 | |



ENLARGED PLAN SHEET NOTES

- A. ALL NOTES & LEGENDS ON SHEET A290, A291, A292, A293, A294, A295, A296, A297, A298
 - B. SEE SHEET A204 FOR FINISH LEGEND
 - C. ALL ELECTRICAL OUTLETS ABOVE CASEWORK TO BE ORIENTED HORIZONTALLY
 - D. ELECTRICAL OUTLETS SHOWN FOR REFERENCE. SEE FOR LOCATIONS
 - E. ALL CASEWORK TO BE LOCKABLE U.N.O.
- MEP COMPONENT ANCHORAGE NOTE**
ALL MECHANICAL, PLUMBING, AND ELECTRICAL COMPONENTS SHALL BE ANCHORED AND INSTALLED PER THE DETAILS ON THE DSA APPROVED CONSTRUCTION DOCUMENTS. THE FOLLOWING COMPONENTS SHALL BE ANCHORED OR BRACED TO MEET THE FORCE AND DISPLACEMENT REQUIREMENTS PRESCRIBED IN THE 2019 CBC SECTIONS 1617A.1.18 THROUGH 1617A.1.26 AND ASCE 7-16 CHAPTER 13, 26, AND 30:
1. ALL PERMANENT EQUIPMENT AND COMPONENTS.
 2. TEMPORARY, MOVABLE OR MOBILE EQUIPMENT THAT IS PERMANENTLY ATTACHED (E.G. HARD WIRED) TO THE BUILDING UTILITY SERVICES SUCH AS ELECTRICITY, GAS OR WATER. "PERMANENTLY ATTACHED" SHALL INCLUDE ALL ELECTRICAL CONNECTIONS EXCEPT PLUGS FOR 110/220 VOLT RECEPTACLES HAVING FLEXIBLE CABLE.
 3. TEMPORARY, MOVABLE OR MOBILE EQUIPMENT WHICH IS HEAVIER THAN 400 POUNDS OR HAS A CENTER OF MASS LOCATED 4' OR MORE ABOVE THE ADJACENT FLOOR OR ROOF LEVEL THAT DIRECTLY SUPPORTS THE COMPONENT IS REQUIRED TO BE RESTRAINED IN A MANNER APPROVED BY DSA.
- THE FOLLOWING MECHANICAL AND ELECTRICAL COMPONENTS SHALL BE POSITIVELY ATTACHED TO THE STRUCTURE BUT NEED NOT DEMONSTRATE DESIGN COMPLIANCE WITH THE REFERENCES NOTED ABOVE. THESE COMPONENTS SHALL HAVE FLEXIBLE CONNECTIONS MUST ALLOW MOVEMENT IN BOTH TRANSVERSE AND LONGITUDINAL DIRECTIONS:
- A. COMPONENTS WEIGHING LESS THAN 400 POUNDS AND HAVING A CENTER OF MASS LOCATED 4 FEET OR LESS ABOVE THE ADJACENT FLOOR OR ROOF LEVEL THAT DIRECTLY SUPPORT THE COMPONENT.
 - B. COMPONENTS WEIGHING LESS THAN 20 POUNDS, OR IN THE CASE OF DISTRIBUTED SYSTEMS, LESS THAN 5 POUNDS PER FOOT, WHICH ARE SUSPENDED FROM A ROOF OR FLOOR OR HUNG FROM A WALL.
- THE ANCHORAGE OF ALL MECHANICAL, ELECTRICAL AND PLUMBING COMPONENTS SHALL BE SUBJECT TO THE APPROVAL OF THE DESIGN PROFESSIONAL IN GENERAL, RESPONSIBLE CHARGE OR STRUCTURAL ENGINEER DELEGATED RESPONSIBILITY AND ACCEPTANCE DESIGN PROFESSIONAL IN GENERAL. RESPONSIBLE CHARGE OR STRUCTURAL ENGINEER DELEGATED RESPONSIBILITY AND ACCEPTANCE BY DSA. THE PROJECT INSPECTOR WILL VERIFY THAT ALL COMPONENTS AND EQUIPMENT HAVE BEEN ANCHORED IN ACCORDANCE WITH THE ABOVE REQUIREMENTS.



ANDERSON BRULÉ
ARCHITECTS
325 South First Street, 4th Floor
San Jose, California 95113
408.298.1885 | www.aba-arch.com



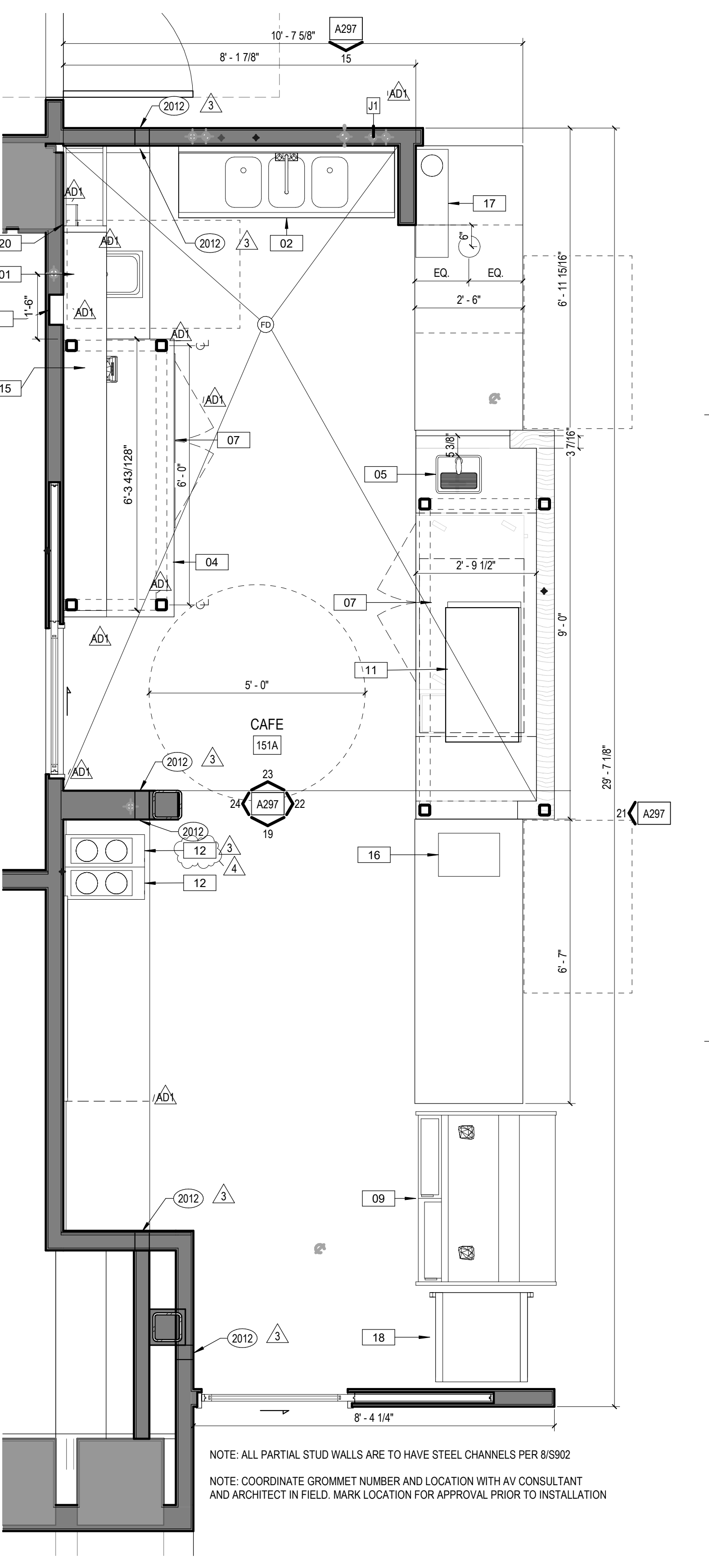
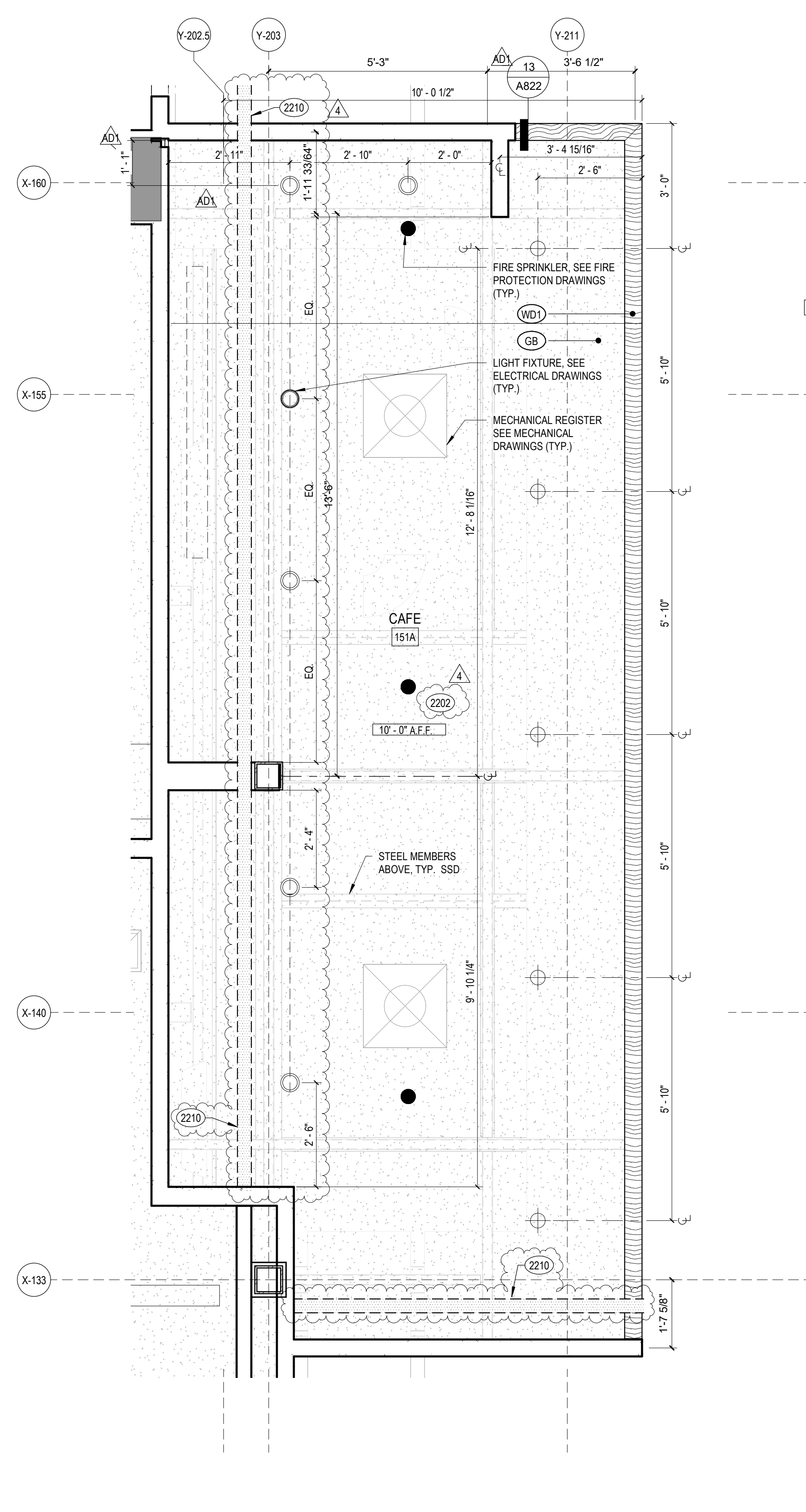
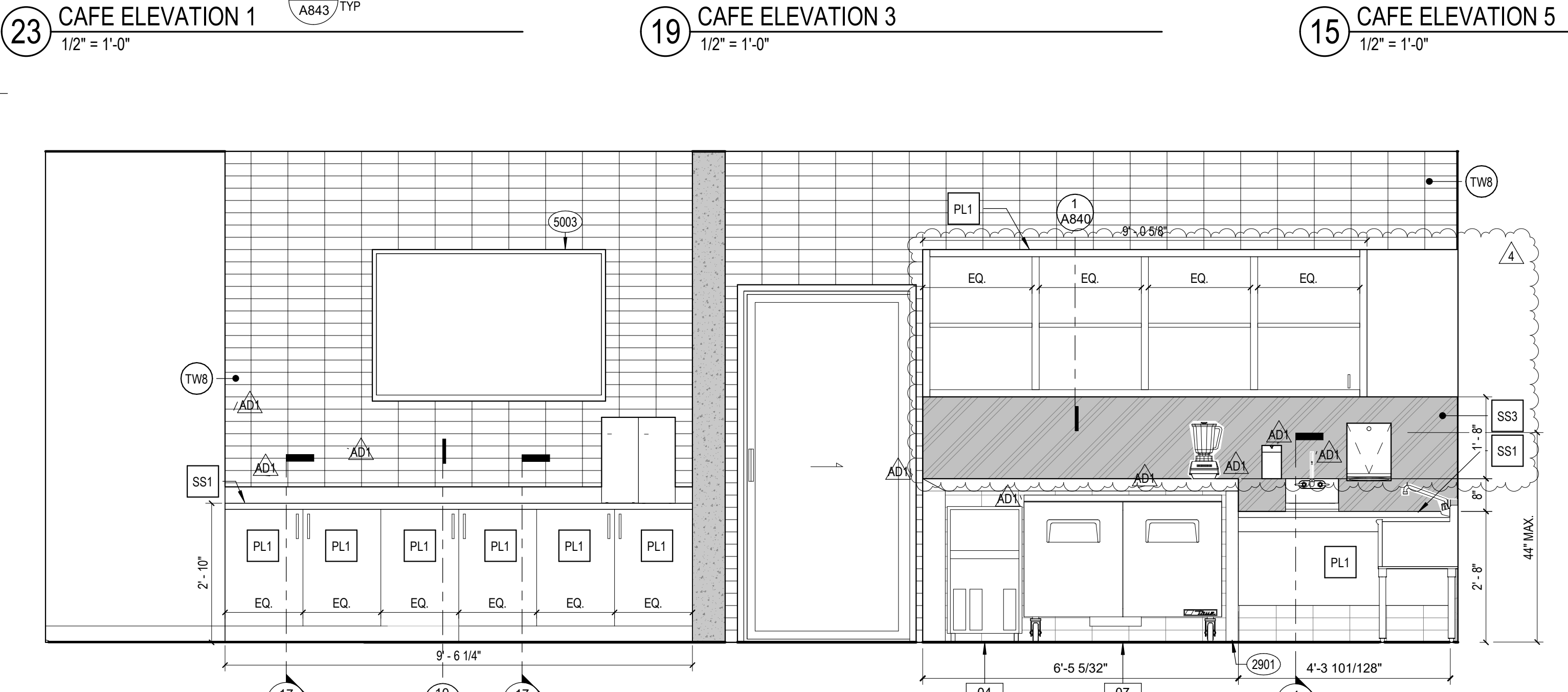
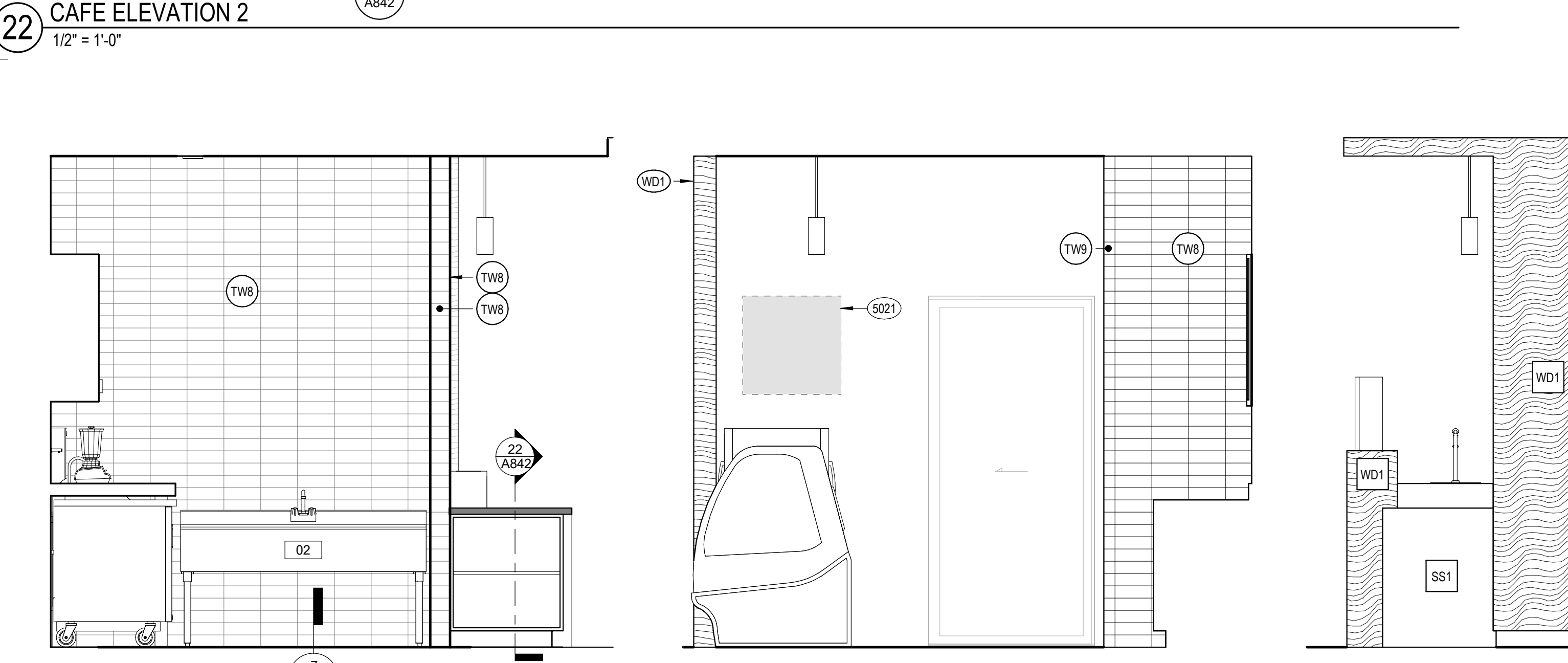
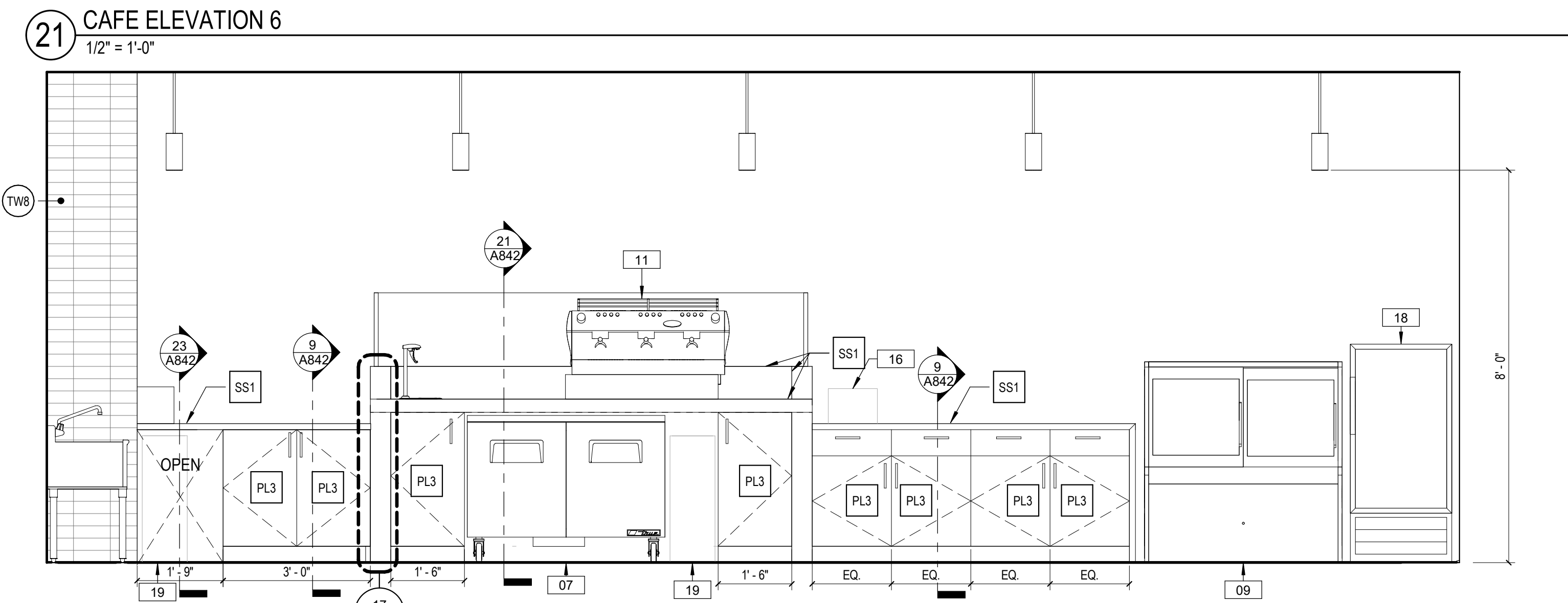
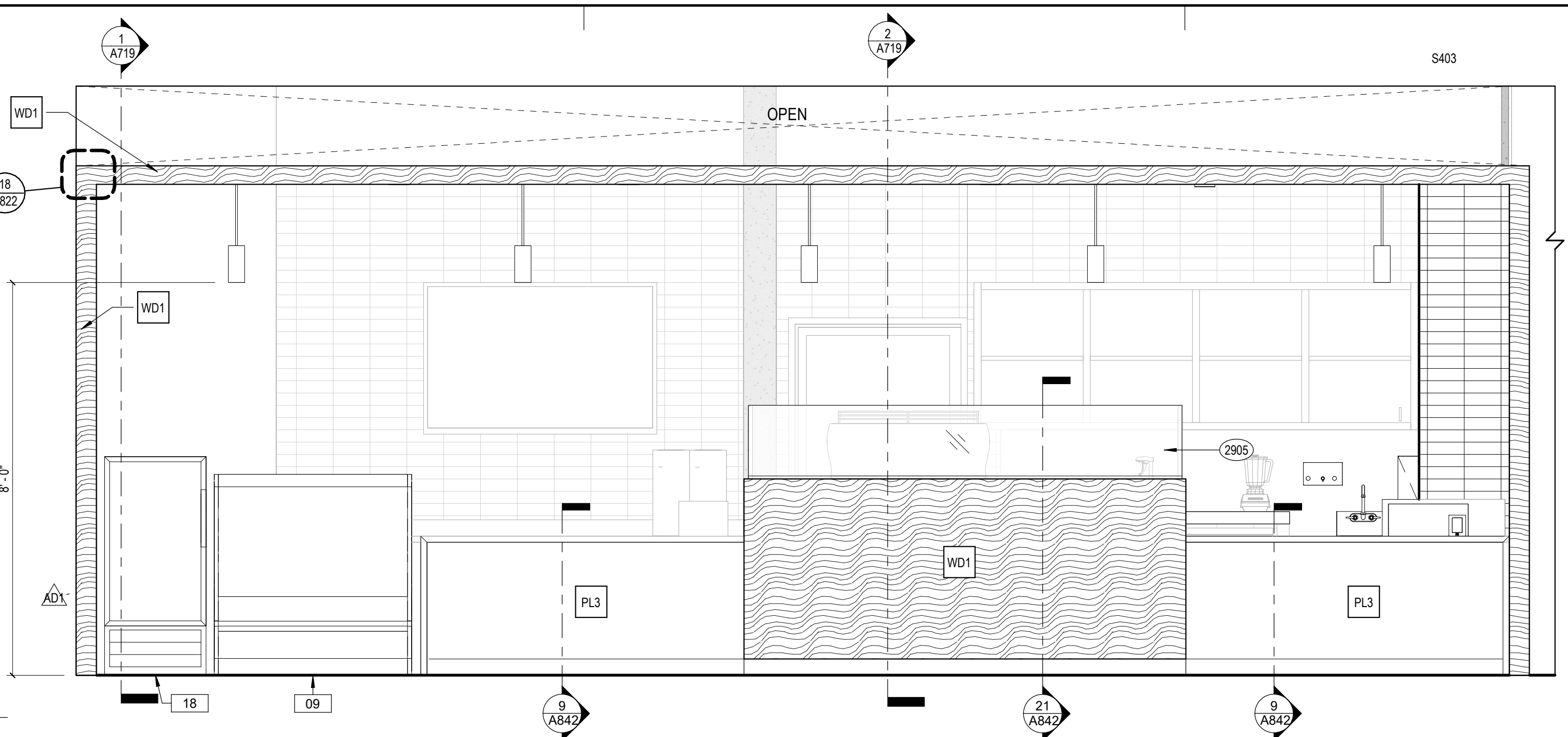
ENLARGED PLAN KEYNOTES

- 2012 SEISMIC JOINT WALL COVER, MTL COVER, CS GROUP 'ASM' OR EQ. PAINT TO MATCH WALL COLOR
- 2202 GYP BD. CLG W/ LEVEL 5 FINISH, W/ SEMI GLOSS PAINT.
- 2210 SEISMIC JOINT WALL COVER, MTL COVER, CS GROUP 'ASM' OR EQ. PAINT TO MATCH CEILING COLOR
- 2901 HSS 3X3 POST WITH POWER ACTUATED FASTENER @ 12" O.C.
- 2905 SNEEZE GUARD
- 5003 TV MONITOR. SEE AV DRAWINGS
- 5021 GRAPHIC SIGNAGE. OFOI

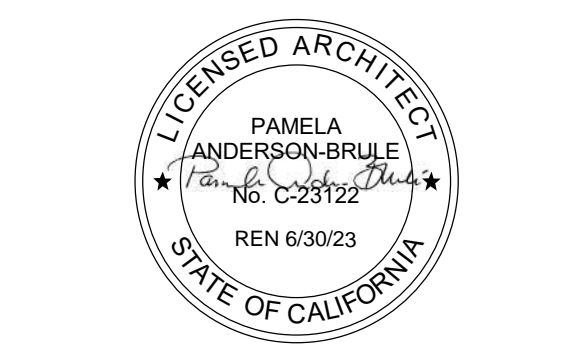


CAFE - FOR REFERENCE ONLY

| CAFÉ EQUIPMENT | | | | | |
|----------------|---------------------------|---------------------------------|-------------------|--------------------------------|-------|
| EQUIPMENT ID. | EQUIPMENT TYPE | Manufacturer | Model | Comments | Count |
| 01 | SOAP DISPENSER | Bobrick Washroom Equipment, Inc | B-306 | CFO | 1 |
| 02 | HAND WASH SINK | Advance Tabco | DI-1SSP | CFO | 1 |
| 04 | ICE MAKER | Eagle Group | BRC-18 | CFO | 1 |
| 05 | FILTERED WATER DISPENSER | ICE-O-MATIC | UCO130A | CFO | 1 |
| 07 | UNDERCOUNTER REFRIGERATOR | TAS Brass and Bronze Works, Inc | B-1230-12 | CFO | 1 |
| 08 | DISPLAY CASE | TRUE | TUC-48-ADA-HC | CFO | 2 |
| 09 | ESPRESSO MACHINE | TRUE | TDM-R-48 | CFO | 1 |
| 11 | COFFEE BREWER | SCHAEFER | AMBIENTE PS | CFO | 1 |
| 12 | COFFEE BREWER | WILBER CURTIS | ALP1012A000 | CFO | 1 |
| 15 | BLENDER WITH COVER | VITAMIX | THE QUIET ONE | CFO | 1 |
| 16 | POINT OF SALE | SQUARE | NA | OFOI. SHOWN FOR REFERENCE ONLY | 1 |
| 17 | COFFEE CONDIMENT STORAGE | NA | NA | OFOI | 1 |
| 18 | PASS THROUGH REFRIGERATOR | TRUE | GDM-10FT-HC-TSL01 | CFO | 1 |
| 19 | TRASH | ULINE | H-5148 | CFO. SHOWN FOR REFERENCE ONLY | 4 |



CONSULTANTS LOGO



| NO. | DATE | REVISIONS |
|-----|------------|-----------------|
| AD1 | 02/10/22 | REVISED BID SET |
| 3 | 08/23/2022 | ADDENDUM 3 |
| 4 | 09/15/2022 | ADDENDUM 4 |

PROJECT TITLE:
WVC LRC RENOVATION
14000 FRUITVALE AVENUE
SARATOGA, CA 95070

PROJECT NO. 19-0703-0
DATE: 08/12/2022
SHEET TITLE:

ENLARGED PLANS - CAFE

SCALE: As indicated

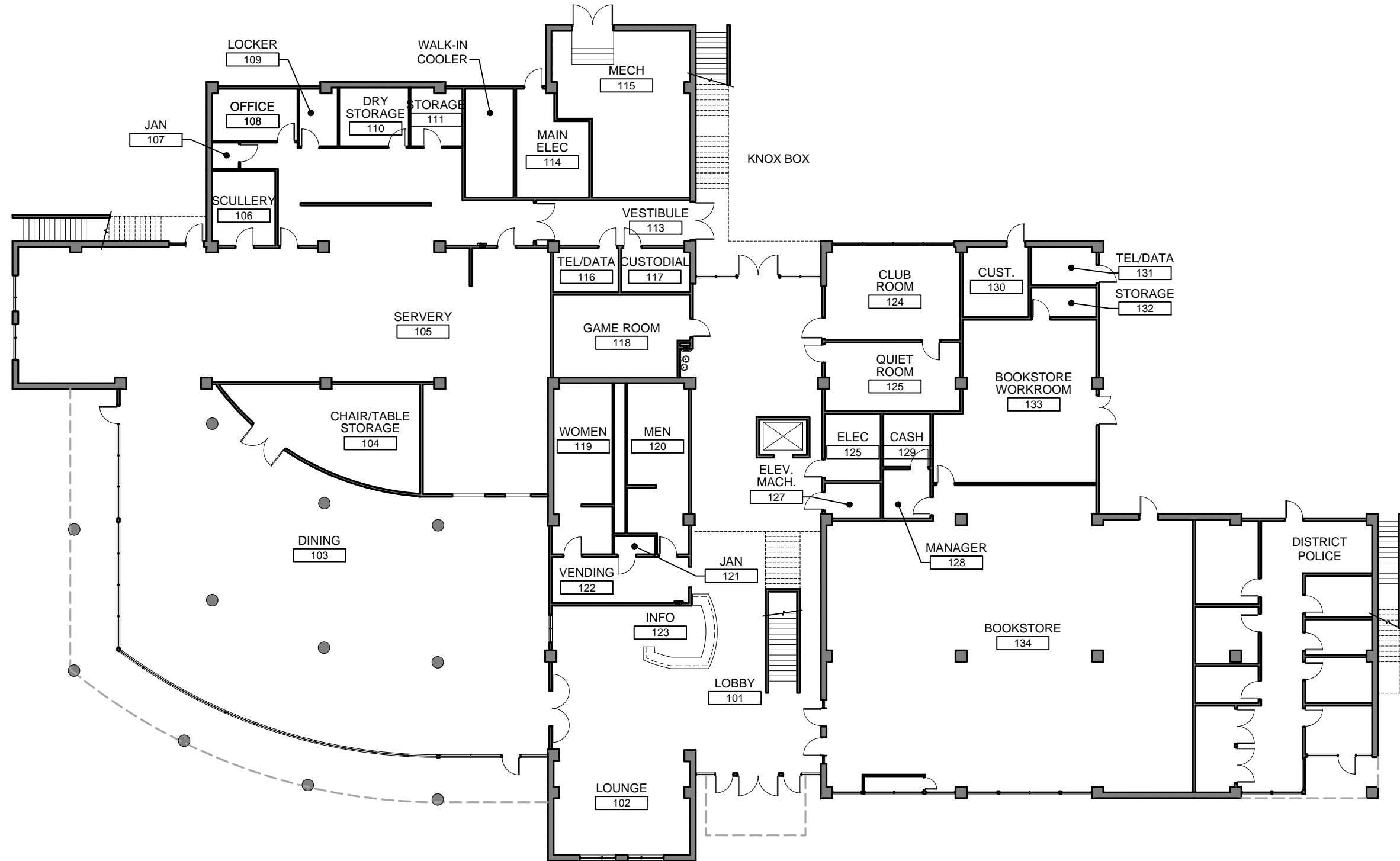
Space Organization



Vision Organization



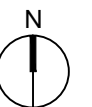
ATTACHMENT B
Mission College Campus Center



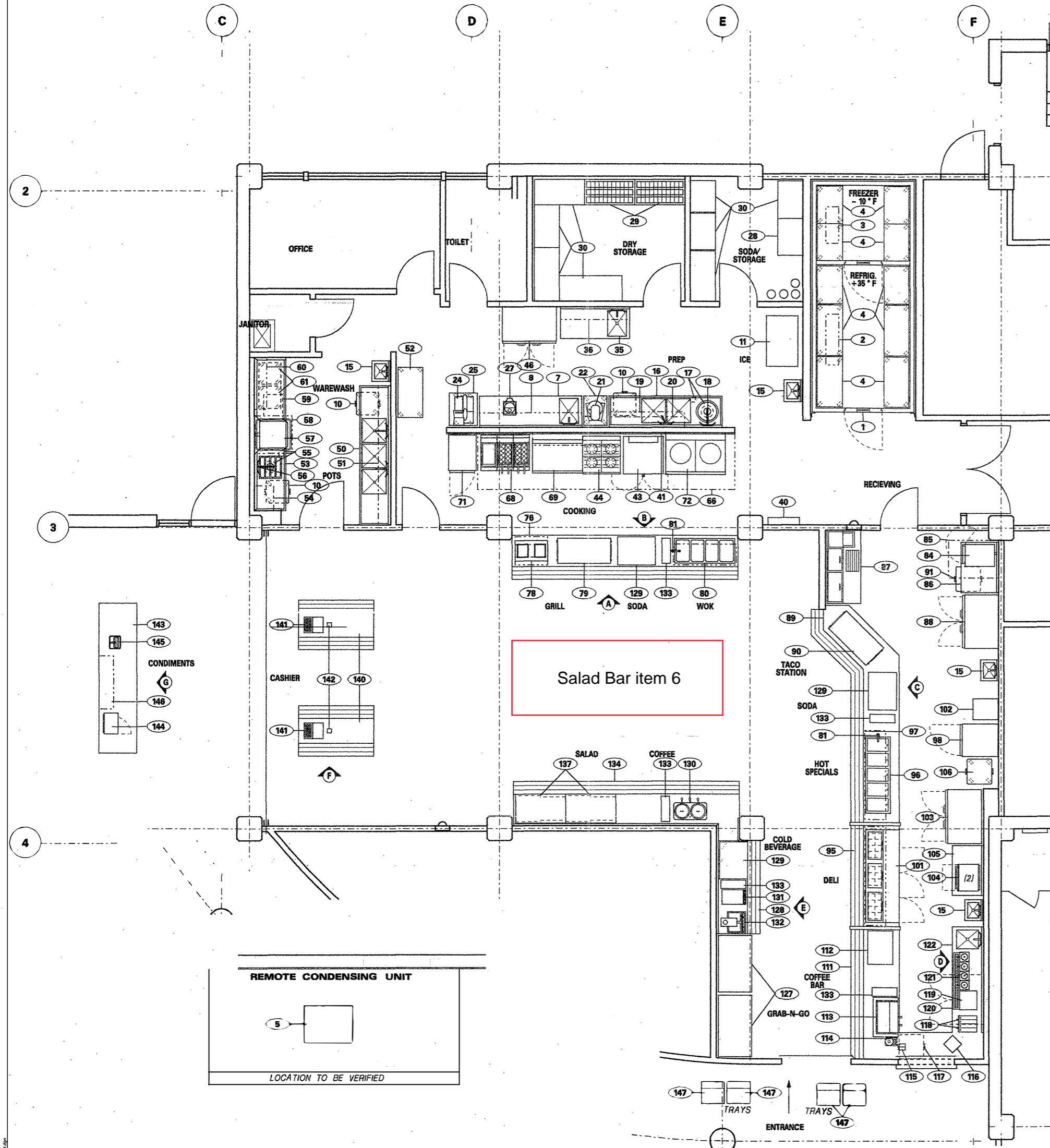
CAMPUS CENTER - FIRST FLOOR

1" = 20'

MISSION COLLEGE
3000 Mission College Blvd
Santa Clara, CA 95054
(408) 988-2200



**ATTACHMENT B
MISSION COLLEGE CAMPUS CENTER**



| ITEM NO | QTY | DESCRIPTION | REMARKS | ITEM NO | QTY | DESCRIPTION | REMARKS |
|---------|-----|-------------------------------|---------------------|---------|-----|---------------------------------|---------|
| 1 | 1 | ION SYSTEM, 10" | | 76 | 1 | SERVING COUNTER | |
| 2 | 2 | PART OF REFRIG SYSTEM ITEM 5 | | 77 | 1 | OPEN NUMBER | |
| 3 | 1 | COLD STORAGE SHELVING | OUTDOOR, AIR COOLED | 78 | 1 | FRENCH FRY WARMING DISPLAY | |
| 4 | 1 | OPEN NUMBER | | 79 | 1 | HEATED DISPLAY | |
| 5 | 1 | OPEN NUMBER | | 80 | 1 | HOT FOOD WELL | |
| 6 | 1 | OPEN NUMBER | | 81 | 2 | FILL FAUCET | |
| 7 | 1 | OPEN NUMBER | | 82 | 1 | OPEN NUMBER | |
| 8 | 1 | OPEN NUMBER | | 83 | 1 | OPEN NUMBER | |
| 9 | 1 | OPEN NUMBER | | 84 | 1 | CONVECTION STEAMER WITH KETTLE | |
| 10 | 1 | OPEN NUMBER | | 85 | 1 | VAPOR HOOD | |
| 11 | 1 | OPEN NUMBER | | 86 | 1 | WORK TABLE | |
| 12 | 1 | OPEN NUMBER | | 87 | 1 | TACO TABLE | |
| 13 | 1 | OPEN NUMBER | | 88 | 1 | REACH-IN REFRIG., 2 SECTION | |
| 14 | 1 | OPEN NUMBER | | 89 | 1 | OPEN NUMBER | |
| 15 | 4 | WALL SHELF | | 90 | 1 | OPEN NUMBER | |
| 16 | 1 | POT RACK | | 91 | 1 | OPEN NUMBER | |
| 17 | 1 | OPEN NUMBER | | 92 | 1 | OPEN NUMBER | |
| 18 | 1 | MIXER, 20-QUART | | 93 | 1 | OPEN NUMBER | |
| 19 | 1 | MIXER STAND | | 94 | 1 | OPEN NUMBER | |
| 20 | 1 | MOBILE RACK | | 95 | 1 | SERVING COUNTER | |
| 21 | 1 | SLICER | | 96 | 1 | HOT FOOD WELLS | |
| 22 | 1 | SLICER STAND | | 97 | 1 | BREATH PROTECTOR | |
| 23 | 1 | OPEN NUMBER | | 98 | 1 | HOT FOOD HOLDING CABINET | |
| 24 | 1 | OPEN NUMBER | | 99 | 1 | OPEN NUMBER | |
| 25 | 1 | OPEN NUMBER | | 100 | 1 | OPEN NUMBER | |
| 26 | 1 | REFRIGERATED SANDWICH TABLE | | 101 | 1 | BREAD RACK | |
| 27 | 1 | FOOD PROCESSOR | | 102 | 1 | REACH-IN REFRIGERATOR | |
| 28 | 1 | SODA SYSTEM SYRUP RACK | | 103 | 1 | MICROWAVE OVEN | |
| 29 | 1 | DUNNAGE RACK | | 104 | 1 | WORK TABLE | |
| 30 | 1 | DRY STORAGE SHELVING | | 105 | 1 | WASTE CONTAINER | |
| 31 | 1 | OPEN NUMBER | | 106 | 1 | OPEN NUMBER | |
| 32 | 1 | OPEN NUMBER | | 107 | 1 | OPEN NUMBER | |
| 33 | 1 | OPEN NUMBER | | 108 | 1 | OPEN NUMBER | |
| 34 | 1 | OPEN NUMBER | | 109 | 1 | OPEN NUMBER | |
| 35 | 1 | WORK TABLE | | 110 | 1 | OPEN NUMBER | |
| 36 | 1 | WALL SHELF | | 111 | 1 | SERVING COUNTER | |
| 37 | 1 | OPEN NUMBER | | 112 | 1 | DISPLAY CASE | |
| 38 | 1 | OPEN NUMBER | | 113 | 1 | ESPRESSO MACHINE | |
| 39 | 1 | OPEN NUMBER | | 114 | 1 | COFFEE GRINDER/DOSER (ESPRESSO) | |
| 40 | 1 | FIRE EXTINGUISHING SYSTEM | | 115 | 1 | GROUNDS KNOCKER | |
| 41 | 1 | STAINLESS STEEL WALL LINING | | 116 | 1 | P.O.S. STATION | |
| 42 | 1 | OPEN NUMBER | | 117 | 1 | WASTE CONTAINER | |
| 43 | 1 | CONVECTION OVEN, 2 DECK | | 118 | 2 | COFFEE GRINDER | |
| 44 | 1 | RANGE, OPEN BURNER W/ OVEN | | 119 | 1 | COFFEE BREWER | |
| 45 | 1 | OPEN NUMBER | | 120 | 1 | UNDERCOUNTER REFRIGERATOR | |
| 46 | 1 | REACH-IN REFRIGERATOR | | 121 | 4 | COFFEE SATELLITE DISPENSER | |
| 47 | 1 | REACH-IN REFRIGERATOR | | 122 | 1 | WORKTABLE WITH SINK | |
| 48 | 1 | OPEN NUMBER | | 123 | 1 | OPEN NUMBER | |
| 49 | 1 | OPEN NUMBER | | 124 | 1 | OPEN NUMBER | |
| 50 | 1 | 3 COMPARTMENT SINK | | 125 | 1 | OPEN NUMBER | |
| 51 | 1 | WALL MOUNTED POT RACK | | 126 | 1 | OPEN NUMBER | |
| 52 | 1 | POT RACK, MOBILE | | 127 | 2 | REACH-IN DISPLAY REFRIGERATOR | |
| 53 | 1 | SOILED DISH TABLE | | 128 | 1 | SERVING COUNTER | |
| 54 | 1 | GLASS RACK | | 129 | 3 | ICE/SODA DISPENSER | |
| 55 | 1 | FOOD WASTE DISPOSER | | 130 | 1 | COFFEE MAKER | |
| 56 | 1 | PRE-RINSE UNIT | | 131 | 1 | JUICE DISPENSER | |
| 57 | 1 | DISHWASHING MACHINE | | 132 | 1 | ICED TEA BREWER | |
| 58 | 1 | VAPOR HOOD | | 133 | 4 | CUP DISPENSER | |
| 59 | 1 | CLEAN DISH TABLE | | 134 | 1 | SERVING COUNTER | |
| 60 | 1 | WALL SHELF | | 135 | 1 | OPEN NUMBER | |
| 61 | 2 | MOBILE GLASS RACK | | 136 | 1 | OPEN NUMBER | |
| 62 | 1 | OPEN NUMBER | | 137 | 2 | REFRIGERATED DISPLAY CASE | |
| 63 | 1 | OPEN NUMBER | | 138 | 1 | OPEN NUMBER | |
| 64 | 1 | OPEN NUMBER | | 139 | 1 | OPEN NUMBER | |
| 65 | 1 | OPEN NUMBER | | 140 | 2 | CASHIER STAND, DOUBLE SIDED | |
| 66 | 1 | EXHAUST VENTILATOR | | 141 | 2 | CASH REGISTER | |
| 67 | 1 | OPEN NUMBER | | 142 | 2 | SCALE ASSEMBLY | |
| 68 | 1 | DEEP FAT FRYER ASSEMBLY | | 143 | 1 | SERVING COUNTER, CONDIMENT | |
| 69 | 1 | GRID/DE | | 144 | 1 | MICROWAVE OVEN | |
| 70 | 1 | OPEN NUMBER | | 145 | 1 | WATER GLASS FILLER | |
| 71 | 1 | REACH-IN REFRIGERATOR/FREEZER | | 146 | 1 | CONDIMENT DISPENSER | |
| 72 | 1 | WOK RANGE, 2 HOLE | | 147 | 4 | TRAY/SILVERWARE DISPENSER | |
| 73 | 1 | OPEN NUMBER | | | | | |
| 74 | 1 | OPEN NUMBER | | | | | |
| 75 | 1 | OPEN NUMBER | | | | | |

See Attached for
Equipment
Schedule



**HIGH TECH CENTER
CAMPUS CENTER**
MISSION COLLEGE
Santa Clara, CA

DATE: 29 SEPTEMBER 1997

REVISIONS:

BID DOCUMENTS

SHEET TITLE:
EQUIPMENT PLAN & SCHEDULE

APPROVED BY: [Signature]
DATE: DEC 2 1997

© 1997 BSA Architects
"All drawings and written material appearing herein constitute the original and copyrighted work of the architect and the same may not be duplicated, used or disclosed without the written consent of the architect."

DRAWN BY: CAD SHEET
CHECKED BY: TR FS-1.1
JOB NO: B149A

ATTACHMENT PLAN
BY: CIVIL-LETTLE
DATE: 10/15/97
PROJECT: MISSION COLLEGE CAMPUS CENTER
SHEET: A2.3.DWG

BUILDING CODE ANALYSIS
CBC 508.2 - ACCESSORY OCCUPANCIES BUILDING ANALYSIS

- GOVERNING CODE: 2013 CALIFORNIA BUILDING CODE
- OCCUPANCY TYPE: (CBC CHAPTER 3) MIXED OCCUPANCY: GROUP B AND A-3
A-3 OCCUPANCY IS AN ACCESSORY OCCUPANCY PER CBC 508.2 AND LESS THAN 10% OF EACH GIVEN FLOOR. A-3 OCCUPANCIES DO NOT OCCUR ON THE THIRD FLOOR
- CONSTRUCTION TYPE: (CBC 602 & TABLE 601) TYPE II - B, WITH AUTOMATED FIRE SPRINKLER SYSTEM THROUGHOUT (AUTOMATED FIRE SPRINKLER SYSTEM USED FOR ATRIUM PER CBC 404.3)
- BASIC ALLOWABLE HEIGHT AND BUILDING AREA: (CBC TABLE 503)

| OCCUPANCY GROUP | SF PER STORY | MAX # OF STORIES | ALLOWABLE BLDG HT |
|-----------------|--------------|------------------|-------------------|
| GROUP B | 23,000 SF | 3 STORIES | 55 FT |
| GROUP A-3 | 9,500 SF | 2 STORIES | 55 FT |
- ACTUAL BUILDING HEIGHT: ± 49' - 3 STORIES, THE ELEVATOR SHAFT, MECHANICAL ENCLOSURE, AND VENT STACKS ARE APPROX. 60' - ALLOWABLE PER CBC 1509)
- ALLOWABLE BUILDING AREA MODIFICATIONS: (CBC TABLE 504) NOT USED
- ACTUAL BUILDING AREA: 151,397 SF
 1ST FLOOR: 37,395 SF
 2ND FLOOR: 31,492 SF
 3RD FLOOR: 32,510 SF
 TOTAL BUILDING SQUARE FOOTAGE: 101,397 SF
- ALLOWABLE BUILDING AREA MODIFICATIONS: (CBC 505)

AREA INCREASE FOR FRONTAGE

$$I = [F(P-0.25)]/W(30)$$

$$F = \text{BLDG PERIMETER THAT FRONTS ON A PUBLIC WAY OR OPEN SPACE HAVING 20 FT OR GREATER OPEN MINIMUM WIDTH (FT)}$$

$$W = \text{WIDTH OF PUBLIC WAY OR OPEN SPACE (FT)}$$

$$I = [1070(11070-0.25)]/30(90) = 75$$

ALLOWABLE AREA INCREASE PER STORY (SF)

B OCCUPANCY

$$A_b = A_1 + [A_1]i + [A_1]i$$

$$A_b = 23,000 + [23,000 \times 0.75] + [23,000 \times 0.75] = 66,250 \text{ SF PER STORY}$$

A-3 OCCUPANCY

$$A_{a3} = A_1 + [A_1]i + [A_1]i$$

$$A_{a3} = 9,500 + [9,500 \times 0.75] + [9,500 \times 0.75] = 35,625 \text{ SF PER STORY}$$

ACCESSORY OCCUPANCIES - SUM OF THE RATIOS

| OCCUPANCY: | B | A-3 | SUM OF THE RATIOS (CBC 508.4.2) |
|---------------|----------------------|-----------|---------------------------------|
| FIRST FLOOR: | ACTUAL: 32,898 SF | 5,586 SF | 32,898 SF + 5,586 SF = 38,484 |
| | ALLOWABLE: 66,250 SF | 35,625 SF | 66,250 SF + 35,625 SF = 101,875 |
| SECOND FLOOR: | ACTUAL: 21,874 SF | 10,182 SF | 21,874 SF + 10,182 SF = 32,056 |
| | ALLOWABLE: 66,250 SF | 35,625 SF | 66,250 SF + 35,625 SF = 101,875 |
| THIRD FLOOR: | ACTUAL: 32,398 SF | 0 SF | 32,398 SF + 0 SF = 32,398 |
| | ALLOWABLE: 66,250 SF | 0 SF | 66,250 SF + 0 SF = 66,250 |
| ROOF: | NOT OCCUPIED | | TOTAL = 1.46 |

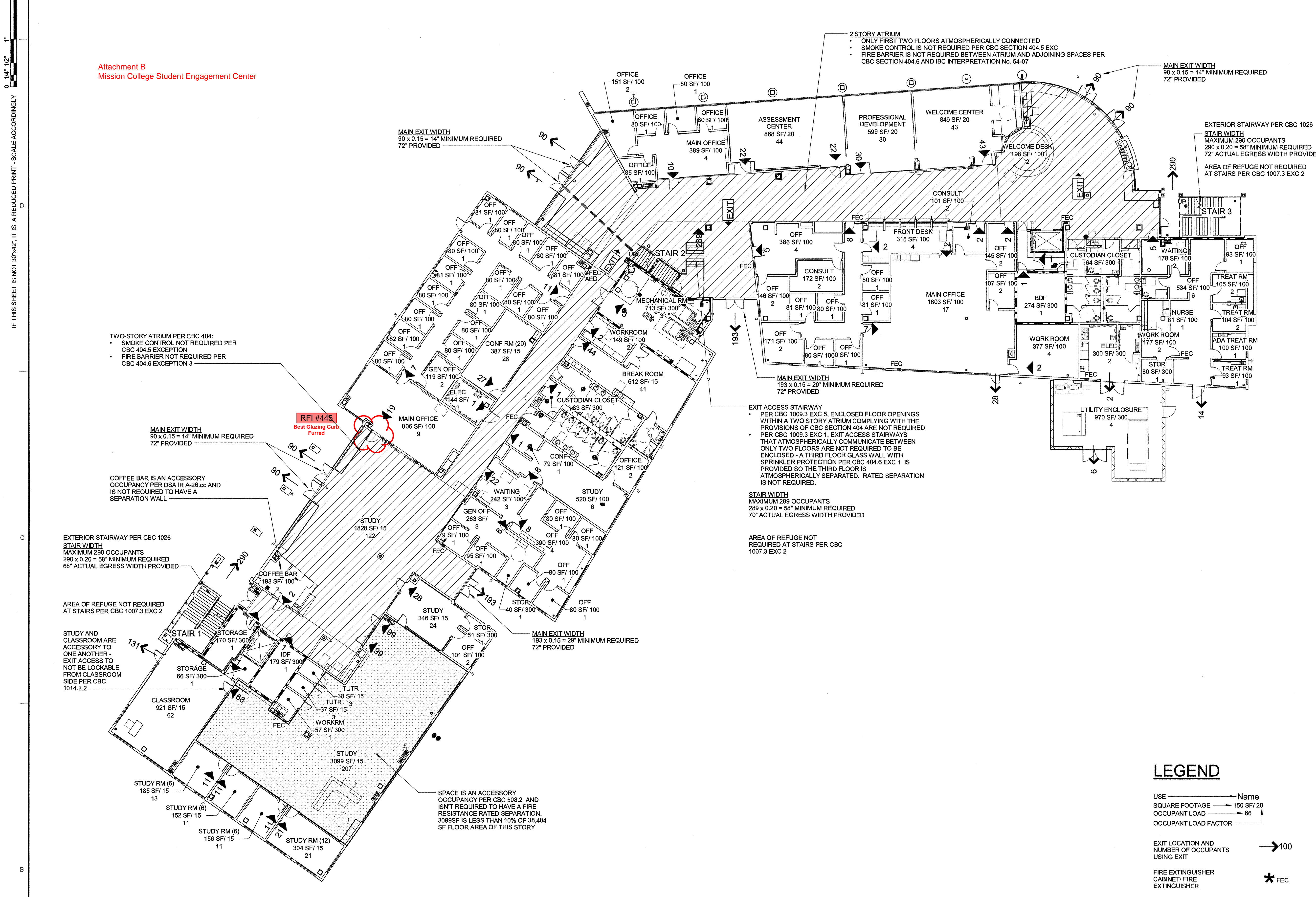
NOTE: TOTAL SUM OF THE RATIOS MUST BE LESS THAN 3 FOR A THREE STORY BUILDING PER CBC 506.5.2, THEREFORE BUILDING COMPLIES
- FIRE FLOW REQUIREMENTS: 2,038 GPM TO SITE HYDRANTS, FOUR HOUR DURATION
 1887.5 GPM - PER CBC TABLE 88.10.1 FIRE FLOW REQ'D: 6,750 GPM HOWEVER 75% REDUCTION ALLOWED FOR SPRINKLERS
 + 250 GPM FOR HIGHEST 1,500 SF BUILDING SPRINKLER DEMAND
 + 100 GPM FOR HOSE REQUIREMENT
 = 3,625 GPM REQUIRED
 FIRE FLOW PROVIDED IS A MINIMUM 5550 GPM BASED ON FIRE FLOW TESTS PROVIDED BY SANDIS ENGINEERING ON 9/18/2014.
- FIRE RESISTIVE REQUIREMENTS: (CBC TABLE 601)

| | |
|---|---|
| STRUCTURAL FRAME: | 0 HR |
| BEARING WALLS - EXTERIOR: | 0 HR |
| BEARING WALLS - INTERIOR: | 0 HR |
| NON-BEARING WALLS & PARTITIONS - EXTERIOR: | 0 HR FIRE SEPARATION DISTANCE $10 \leq x < 30$ FT (CBC TABLE 602) |
| NON-BEARING WALLS & PARTITIONS - INTERIOR: | 0 HR |
| FLOOR CONSTRUCTION: | 0 HR |
| ROOF CONSTRUCTION: | 0 HR |
| SHAFT ENCLOSURES (CBC 713.4): | 1 HR (3 STORIES OR LESS) NOTE: STRUCTURAL STEEL PENETRATING SHAFTS TO HAVE 1-HR INTUMESCENT COATING |
| PROJECTIONS (CBC 705.2): | NON-COMBUSTIBLE |
| EXTERIOR DOORS AND WINDOWS (CBC 704.1 & TABLE 704.7): | UNPROTECTED, NO LIMIT (AUTOMATIC SPRINKLER SYSTEM, FIRE SEPARATION DISTANCE $10 \leq x < 30$ FT) |
| EGRESS BALCONIES (CBC 1019, EXCEPTION): | NOT USED |
| STAIRWAY STRUCTURAL COLUMN & BEAM SUPPORT: | 0 HR |
| STAIRWAY CONSTRUCTION: | NON-COMBUSTIBLE SEE NOTES ON PLANS FOR SEPARATION REQUIREMENTS |
| CORRIDORS (CBC TABLE 1018.1): | 0 HR WITH SPRINKLER SYSTEM |
- OCCUPANT LOAD: (CBC 1004, TABLE 1004.1.2)

| | |
|------------|-----------------|
| 1ST FLOOR: | 816 OCCUPANTS |
| 2ND FLOOR: | 899 OCCUPANTS |
| 3RD FLOOR: | 515 OCCUPANTS |
| ROOF: | UN-OCCUPIED |
| TOTAL: | 2,500 OCCUPANTS |

THEREFORE A MINIMUM OF 3 STAIRS ARE REQUIRED (CBC TABLE 1021.1) AND A MINIMUM OF 3 EXITS ARE REQUIRED FROM THE FIRST FLOOR
- COMMON PATH OF EGRESS TRAVEL: (CBC 1014.3) COMMON EGRESS PATH TRAVEL SHALL NOT EXCEED 75 FEET PER EXCEPTION CBC 2007.1014.3.

Attachment B
Mission College Student Engagement Center



FIRST FLOOR TOTAL OCCUPANTS: **816**

LEGEND

- USE: SQUARE FOOTAGE - 150 SF/20, OCCUPANT LOAD - 69
- EXIT LOCATION AND NUMBER OF OCCUPANTS USING EXIT: → 100
- FIRE EXTINGUISHER CABINET FIRE EXTINGUISHER: * FEC
- OCCUPANT LOAD: XX
- CEILING MOUNTED "EXIT" SIGNS W/ DIRECTIONAL ARROWS WHERE SHOWN: EXIT →
- A-3 OCCUPANCY: [Pattern]
- ATRIUM: [Pattern]
- CORRIDOR: [Pattern]
- 1 HR RATED PARTITION: [Pattern]
- SMOKE PARTITION: [Pattern]

1 LIFE SAFETY FIRST FLOOR PLAN
SCALE: 1/16" = 1'-0"

LIONAKIS
Community College District
1919 Nineteenth Street
Sacramento CA 95811
P 916.558.1900 F 916.558.1919
www.lionakis.com

CONTRACTOR

ARC
Document Solutions
Hyperlinking
Gibane
LIONAKIS

SEAL

PROJECT
STUDENT ENGAGEMENT CENTER INCREMENT #2
MISSION COLLEGE
3000 MISSION COLLEGE BLVD.
SANTA CLARA, CA 95054

CLIENT
WEST VALLEY - MISSION COMMUNITY COLLEGE DISTRICT
14000 FRUITVALE AVE
SARATOGA, CA 95070

| MARK | DATE | DESCRIPTION |
|------|------------|---------------------|
| | 05/21/2015 | INC 92 DSA APPROVAL |

MANAGEMENT

| | |
|----------------------|---------------|
| LIONAKIS PROJECT NO: | 012052 |
| CLIENT PROJECT NO: | 700.00.007 |
| DRAWN BY: | Author |
| CHECKED BY: | Checker |
| COPYRIGHT: | LIONAKIS 2013 |

FILE NO. 43-C3
IDENTIFICATION STAMP
DIV. OF THE STATE ARCHITECT
01-114325
DATE: MAY 7 9 2015

TITLE
CODE REVIEW

SHEET
G-021

VOL. I WV-MISSION MAIN BUILDING REPLACEMENT - Phase II

general

civil

landscape

structural

architectural

NEXT

PREV

HOME

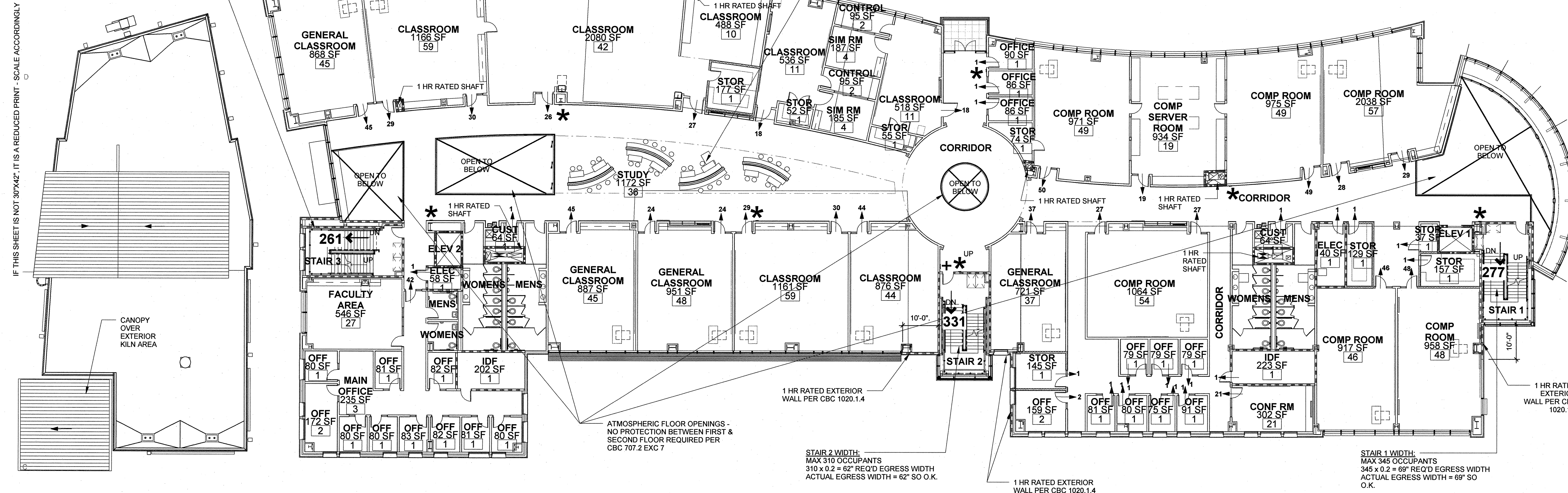
I:\Revit\userfiles\12062_BIM_A-MASTER_R14_CENTRAL_michael.walsh.rvt 5/27/2015 9:45:52 AM

BUILDING CODE ANALYSIS AREA A, B, & C

1919 Nineteenth Street
Sacramento, CA 95811
P 916.558.1900 F 916.558.1919
www.lionakis.com

CONSULTANT

STAIR 3 WIDTH:
MAX 345 OCCUPANTS
345 x 0.2 = 69' REQ'D EGRESS WIDTH
ACTUAL EGRESS WIDTH = 69' SO O.K.

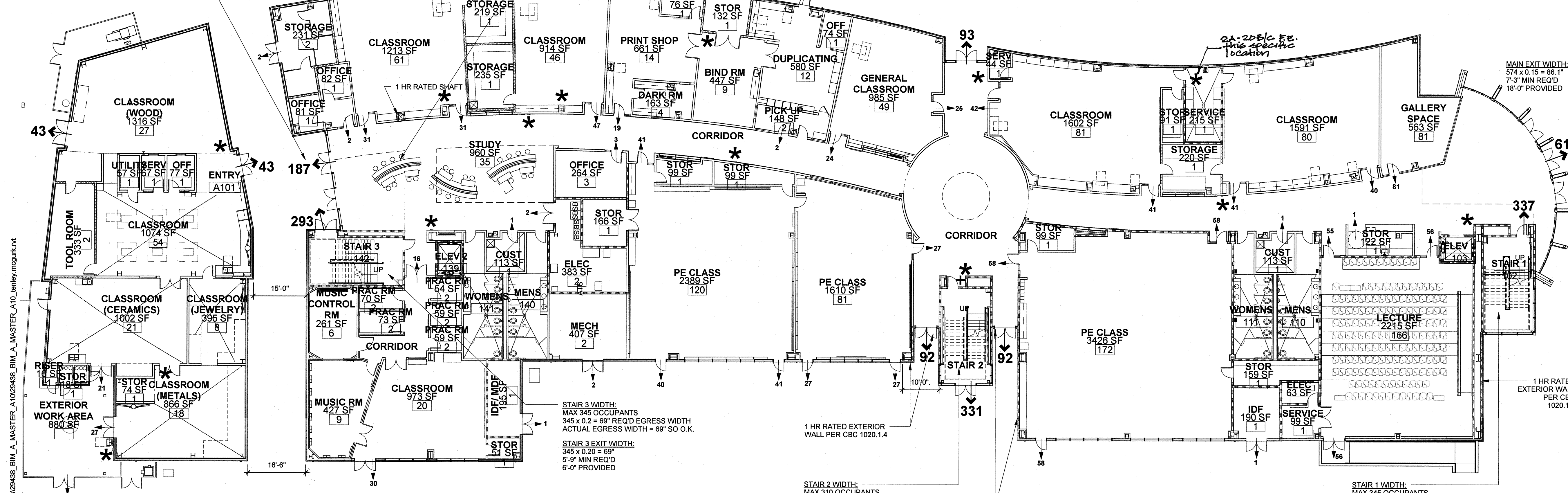


AREA C - SECOND FLOOR
0 TOTAL OCCUPANTS

AREAS A & B - SECOND FLOOR
869 TOTAL OCCUPANTS - SECOND FLOOR - AREAS A & B

SECOND FLOOR - MAIN BUILDING REPLACEMENT - AREAS A, B, & C

MAIN EXIT WIDTH:
260 x 0.15 = 39'
3'-3" MIN REQ'D
12'-0" PROVIDED

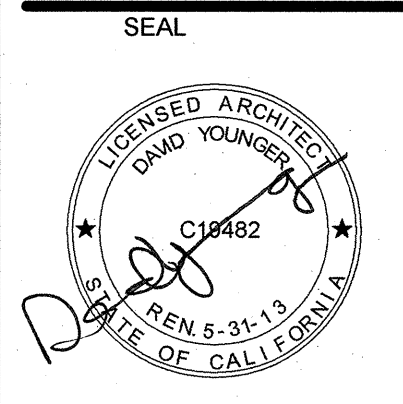


AREA C - FIRST FLOOR
133 TOTAL OCCUPANTS

AREAS A & B - FIRST FLOOR
1323 TOTAL OCCUPANTS

FIRST FLOOR - MAIN BUILDING REPLACEMENT - AREAS A, B, & C

| | |
|--|---|
| 1. GOVERNING CODE: | 2007 CALIFORNIA BUILDING CODE |
| 2. OCCUPANCY TYPE: | GROUP B (CBC 303 & 304) |
| 3. CONSTRUCTION TYPE: | TYPE II - B, WITH AUTOMATED FIRE SPRINKLER SYSTEM (AUTOMATED FIRE SPRINKLER SYSTEM USED FOR ATRIUM PER CBC 404.3) |
| 4. BASIC ALLOWABLE HEIGHT AND BUILDING AREA: | GROUP B 23,000 SF 4 STORIES 53 FT |
| 5. ACTUAL BUILDING HEIGHT: | ± 49' - 3 STORIES (CLEAR STORY IS AN AVERAGE OF 54'-10". THE STAIR PENTHOUSE IS ALLOWED TO BE APPROX. 60' PER CBC 1509) |
| 6. ALLOWABLE BUILDING HEIGHT INCREASES: | NOT USED |
| 7. ACTUAL BUILDING AREA: | AREAS A & B 1ST FLOOR: 38,322 SF 2ND FLOOR: 37,130 SF 3RD FLOOR: 36,545 SF TOTAL BUILDING SQUARE FOOTAGE (AREAS A, B, & C): 118,066 SF |
| 8. ALLOWABLE BUILDING AREA MODIFICATIONS: | AREA INCREASE FOR FRONTAGE $I_f = [F/P - 0.25] W/30$ F = BLDG PERIMETER THAT FRONTS ON A PUBLIC WAY OR OPEN SPACE HAVING 20 FT OR GREATER OPEN MINIMUM WIDTH (FT) P = PERIMETER OF ENTIRE BUILDING (FT) W = WIDTH OF PUBLIC WAY OR OPEN SPACE (FT) $I_f = [1255/1255 - 0.25] 30/30 = .75$ ALLOWABLE AREA INCREASE PER STORY (SF) $A^a = A_1 + [A_1 I_f] + A_2 I_f$ (SPRINKLER INCREASE NOT ALLOWED PER CBC 506.3) $A^a = 23,000 + [23,000 \times .75] = 40,250$ SF PER STORY ACTUAL 1ST FLOOR (AREA A, B, & C) SF: 38,322 SF - ok ACTUAL 2ND FLOOR (AREA A, B, & C) SF: 37,130 SF - ok ACTUAL 3RD FLOOR (AREA A, B, & C) SF: 36,545 SF - ok |
| 9. FIRE FLOW REQUIREMENTS: | 2,850 GPM TO SITE HYDRANTS 2500 GPM - CBC TABLE 88.105.1 FIRE FLOW REQ'D: 7,250 GPM HOWEVER 50% REDUCTION ALLOWED FOR SPRINKLERS PER DSA POLICY DSA-01 250 GPM FOR HIGHEST 1,500 SF BUILDING SPRINKLER DEMAND 100 GPM FOR HOSE REQUIREMENT 3,625 GPM REQUIRED FIRE FLOW PROVIDED IS A MINIMUM 4,000 GPM BASED ON FIRE FLOW TESTS PROVIDED BY SANDIS ENGINEERING ON 7/18/2008 |
| 10. FIRE RESISTIVE REQUIREMENTS: | STRUCTURAL FRAME: 0 HR BEARING WALLS - INTERIOR: 0 HR BEARING WALLS - EXTERIOR: 0 HR NON-BEARING WALLS & PARTITIONS - EXTERIOR: 0 HR FIRE SEPARATION DISTANCE: 10' x < 30' FT (CBC TABLE 602) NON-BEARING WALLS & PARTITIONS - INTERIOR: 0 HR FLOOR CONSTRUCTION: 0 HR ROOF CONSTRUCTION: 0 HR SHAFT ENCLOSURES (CBC 707.4): 1 HR (3 STORIES OR LESS) PROJECTIONS (CBC 704.2.1): NON-COMBUSTIBLE EXTERIOR DOORS AND WINDOWS (CBC 704.8.1 & TABLE 704.7): UNPROTECTED, NO LIMIT (AUTOMATIC SPRINKLER SYSTEM, FIRE SEPARATION DISTANCE 10' x < 30' FT) EGRESS BALCONIES (CBC 1014.5.1, EXCEPTION): NOT USED STAIRWAY STRUCTURAL COLUMN & BEAM SUPPORT: 0 HR STAIRWAY CONSTRUCTION: NON-COMBUSTIBLE 1 HR SEPARATION FROM BUILDING CORRIDORS (CBC 1017.1): 0 HR WITH SPRINKLER SYSTEM |
| 11. OCCUPANT LOAD: | 1ST FLOOR (AREA A, B, & C): 1,456 OCCUPANTS 2ND FLOOR (AREA A, B, & C): 869 OCCUPANTS 3RD FLOOR (AREA A, B, & C): 876 OCCUPANTS ROOF (AREA A, B, & C): UNOCCUPIED TOTAL (AREA A, B, & C): 3,201 OCCUPANTS THEREFORE A MINIMUM OF 3 STAIRS ARE REQUIRED (CBC TABLE 1019.1) WHILE 4 EXITS ARE REQUIRED FROM THE FIRST FLOOR. |
| 12. COMMON PATH OF EGRESS TRAVEL: | COMMON EGRESS PATH TRAVEL SHALL NOT EXCEED 100 FEET PER EXCEPTION CBC 2007: 1014-3.1. |
| 13. NOTE: | PLEASE SEE LETTER DATED SEPT 28TH, 2010 BY THE FIRE CONSULTANTS JUSTIFYING THE USE OF THE HORIZONTAL FIRE SHUTTERS IN LIAU OF AN ATRIUM PER CBC 707.2 EXC 12 AND CBC 711.8. |
| 14. NOTE: | SANTA CLARA FIRE MARSHALL MARTIN VON RAESFELD APPROVED THE HORIZONTAL FIRE SHUTTERS ON DEC. 8, 2010 WITH THE FOLLOWING CONDITIONS: 1. SIDEWALL SPRINKLERS ARE REQUIRED (DEFERRED APPROVAL) BELOW THE HORIZONTAL FIRE SHUTTER. 2. THE HORIZONTAL FIRE SHUTTERS WILL HAVE APPROVED ELECTRICAL STANDBY POWER OR AUTOMATICALLY CLOSE IF POWER IS LOST. 3. FULL COVERAGE SMOKE DETECTION WILL BE TIED TO THE HORIZONTAL FIRE SHUTTERS. |



PROJECT
MISSION COLLEGE

MAIN BUILDING REPLACEMENT PHASE 1

3000 MISSION COLLEGE BLVD
SANTA CLARA, CA 95054-1897

ISSUED

| MARK | DATE | DESCRIPTION |
|------|----------|------------------|
| | 09-01-11 | DSA APPROVAL SET |

MANAGEMENT
LIONAKIS PROJECT NO.: 29438
OWNER PROJECT NO.: 1.307/23
DRAWN BY: Author
CHECKED BY: Checker
COPYRIGHT: LIONAKIS 2011

FILE NO. 43-C3
IDENTIFICATION STAMP
DIV. OF THE STATE ARCHITECT
01-111357
AC. [Signature]
DATE: SEP 02 2011

LEGEND

| | | | |
|----------------------|---|------------|----------|
| USE | CLASSROOM | 1 HR RATED | [Symbol] |
| SQUARE FOOTAGE | [Symbol] | | |
| OCCUPANT LOAD FACTOR | [Symbol] | | |
| OCCUPANT LOAD | [Symbol] | | |
| EXIT LOCATION | [Symbol] | | |
| NO. OF OCCUPANT | [Symbol] | | |
| | (F.O.) FIRE EXTINGUISHER & CABINET, SEE FLR PLNS | | [Symbol] |
| | (A.E.D.) AUTOMATED EXTERNAL DEFIBRILLATOR & CABINET, SEE FLR PLNS | | [Symbol] |

GENERAL NOTES

- CONTRACTOR SHALL VERIFY ALL DIMENSIONS, ELEVATIONS, PROPERTY LINES, ETC. PRIOR TO CONSTRUCTION
- CONTRACTOR SHALL NOTIFY ARCHITECT WHERE CONFLICT OCCURS ON ANY OF THE CONTRACT DRAWINGS OR DOCUMENTS. CONTRACTOR IS NOT TO ORDER MATERIAL OR CONSTRUCT ANY PORTION OF THE BUILDING THAT IS IN CONFLICT UNTIL CONFLICT IS RESOLVED WITH THE AFFECTED PARTIES.
- WHERE REQUIRED, ROOM OCCUPANCY CAPACITIES SHALL BE POSTED WITH THE REQUIREMENTS OF CALIFORNIA STATE FIRE MARSHAL & CBC 1007.2.6
- SPECIAL REQUIREMENTS:
- ASSUMED PROPERTY LINES AND FIRE SEPARATION DISTANCE PER SHEET AS-114
- ACCESSIBLE PATH OF TRAVEL PER SHEET AS-113
- EMERGENCY VEHICLE ROAD ACCESS PER AS-111 & AS-114
- FOR PARKING REQUIREMENTS SEE SHEET AS-111
- FOR BUILDING SIGNAGE REQUIREMENTS SEE SHEET A-131, A-132, & A-133
- CONSTRUCTION SHALL CONFORM TO ALL APPLICABLE CODES AND REGULATIONS, INCLUDING BUT NOT LIMITED TO:
2007 BUILDING STANDARDS ADMINISTRATIVE CODE, PART 1, TITLE 24 C.C.R.
2007 CALIFORNIA BUILDING CODE (CBC), PART 2, TITLE 24 C.C.R.
2007 CALIFORNIA ELECTRICAL CODE (CEC), PART 3, TITLE 24 C.C.R.
2007 CALIFORNIA MECHANICAL CODE (CMC), PART 4, TITLE 24 C.C.R.
2007 CALIFORNIA PLUMBING CODE (CPC), PART 5, TITLE 24 C.C.R.
2007 CALIFORNIA FIRE CODE (CFC), PART 9, TITLE 24 C.C.R. AND CHAPTER 14 - FIRE SAFETY DURING CONSTRUCTION AND DEMOLITION AND CALIFORNIA BUILDING CODE CHAPTER 33 - SAFETY DURING CONSTRUCTION
2007 CALIFORNIA REFERENCED STANDARDS CODE, PART 12, TITLE 24, C.C.R.
TITLE 19, CCR, PUBLIC SAFETY, STATE FIRE MARSHALL REGULATIONS
2002 NFPA 13
2002 NFPA 17
2002 NFPA 17A
2003 NFPA 20
2007 NFPA 24 WITH CALIFORNIA AMENDMENTS
2007 NFPA 72 WITH CALIFORNIA AMENDMENTS
2007 NFPA 80
2006 NFPA 253
2004 NFPA 2001
2002 NFPA 37
2005 NFPA 110
REFERENCE CODE SECTION FOR NFPA STANDARDS - 2007 CBC (SFM) CHAPTER 35 ADA STANDARDS FOR ACCESSIBLE DESIGN (APPENDIX A OF 28 CFR PART 36)

CODE ANALYSIS PLANS

SHEET
G-101