



FACILITIES DEPARTMENT

MISSION COLLEGE

CONSTRUCTION NOTICE



Project: Mission College – Solar Project

Campus Impact: Entire Campus

Activity: Campus Wide Power Shutdown

Dear Mission College Community,

Electrical power to the entire Mission College campus will be shut down due to the interconnection of the new solar equipment to the Campus Power Grid. 40 min parking lot will be closed during the power shutdown. Internet connection will also be interrupted because of the shutdown. Power will be down from 7AM to 7PM.

We understand that this project may create some inconveniences. We will do our best to minimize the amount of disruption.

Thank you for your support to our Bond Construction projects.

Anticipated Schedule

Date: Saturday,
April 6, 2024

Time: 7:00 am – 7:00 pm

Project Contacts:

Nini Reyes-Bolinger,
Exec. Director of Bond Construction
District Facilities Department
Nini.Reyes-Bolinger@wvm.edu
(408) 855-5134

Joseph Martinez,
Senior Project Manager
Gilbane Building Company
JMartinez@GilbaneCo.com
(408) 309-6977

For more information regarding the Capital Improvement Program, please visit the Campus Construction Update page at: <https://wvm.edu/services/construction/Pages/default.aspx>

MC Solar System project

Power Shutdown - 40 Min Parking Lot Closure

Saturday 4/6/2024 From 7 AM to 7 PM

Legend

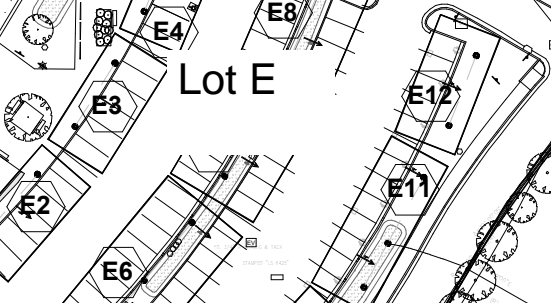
Tent 

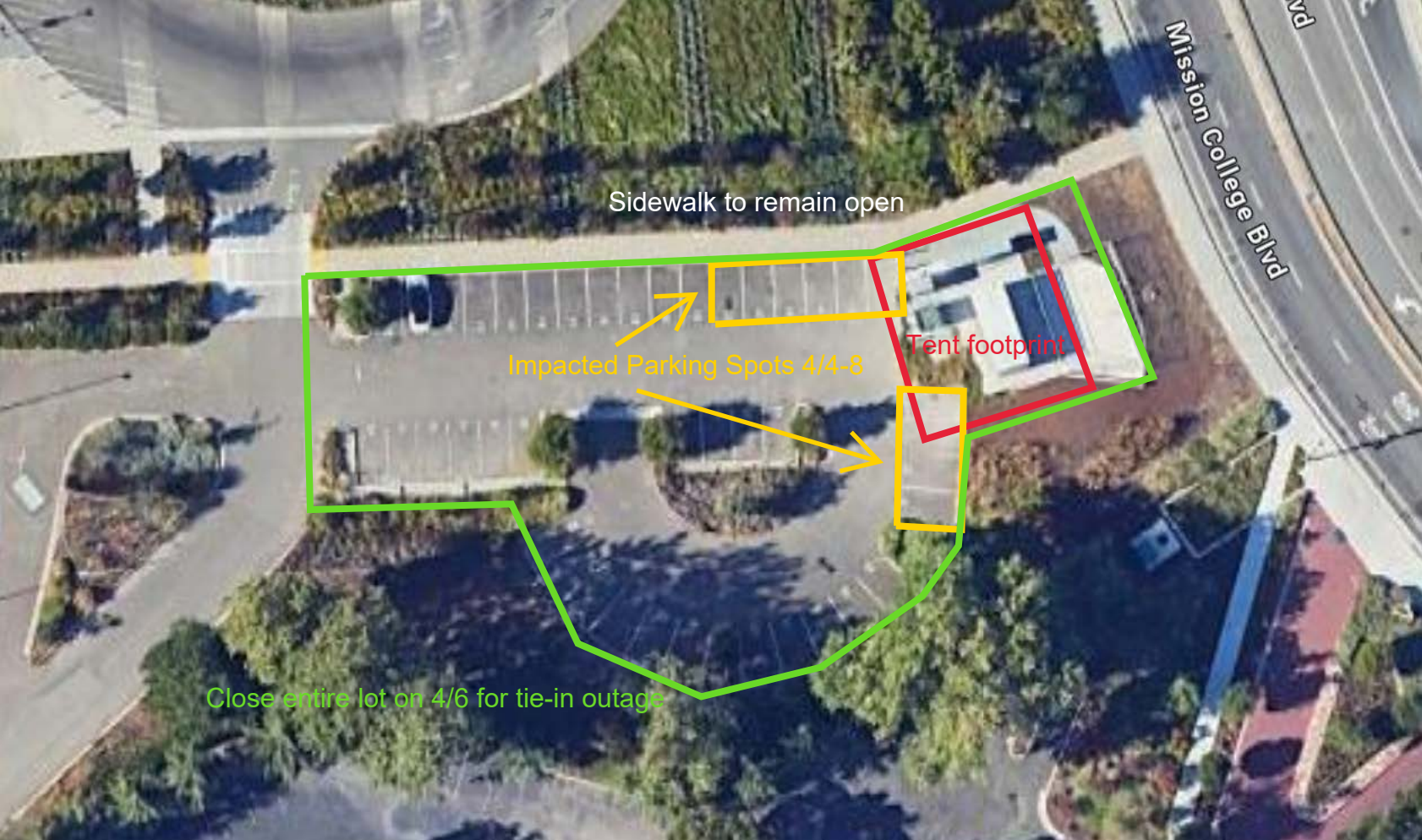
40 min parking
will be closed
on 4/6/2024
7AM-7PM



STUDENT ENGAGEMENT
CENTER
A# 01-114325

Lot E





Sidewalk to remain open

Impacted Parking Spots 4/4-8

Tent footprint

Close entire lot on 4/6 for tie-in outage

Mission College Blvd