

CONSTRUCTION NOTICE **MISSION COLLEGE CAMPUS**



PROJECT NAME: Mission College – Interdisciplinary Plaza Monument Sign

ACTIVITY DESCRIPTION: Sign Installation

SCHEDULE: Monday 5/16/22 to Wednesday 5/18/22 (from 7:00 AM to 6:00 PM)

CAMPUS IMPACT: SEE ATTACHED MAP

The general contractor will be using a crane to install the sign for the Monument Sign project starting on **Monday, 5/16/22**. The Work will be enclosed within the construction barricade.

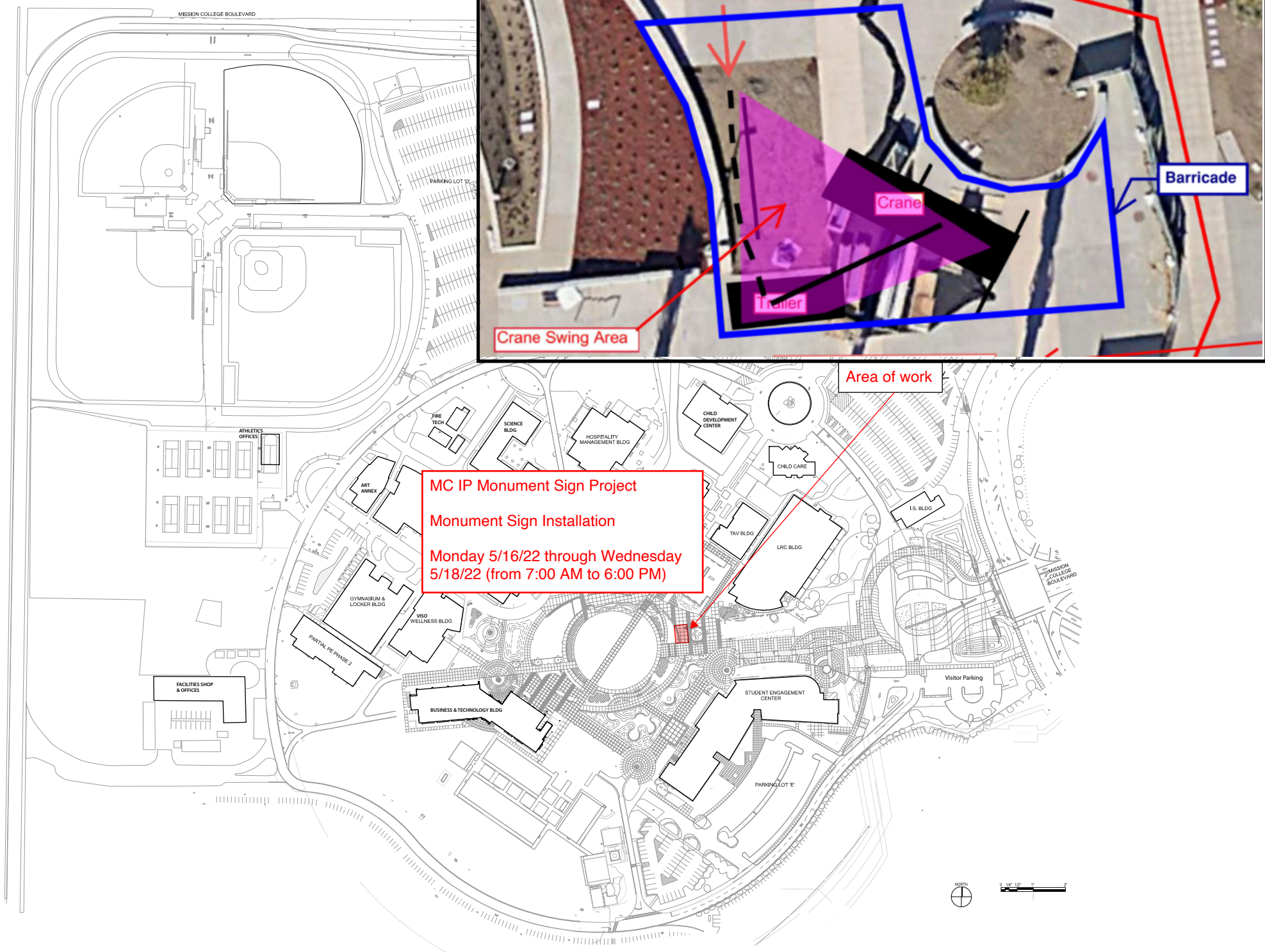
Moderate noise and vibration impacts are expected during this Work, which will be confined within the crane swing area.

PROJECT CONTACT: Nini Reyes-Bolinger, MC Facilities Project Analyst
Nini.Reyes-Bolinger@wvm.edu
(408) 855-5134

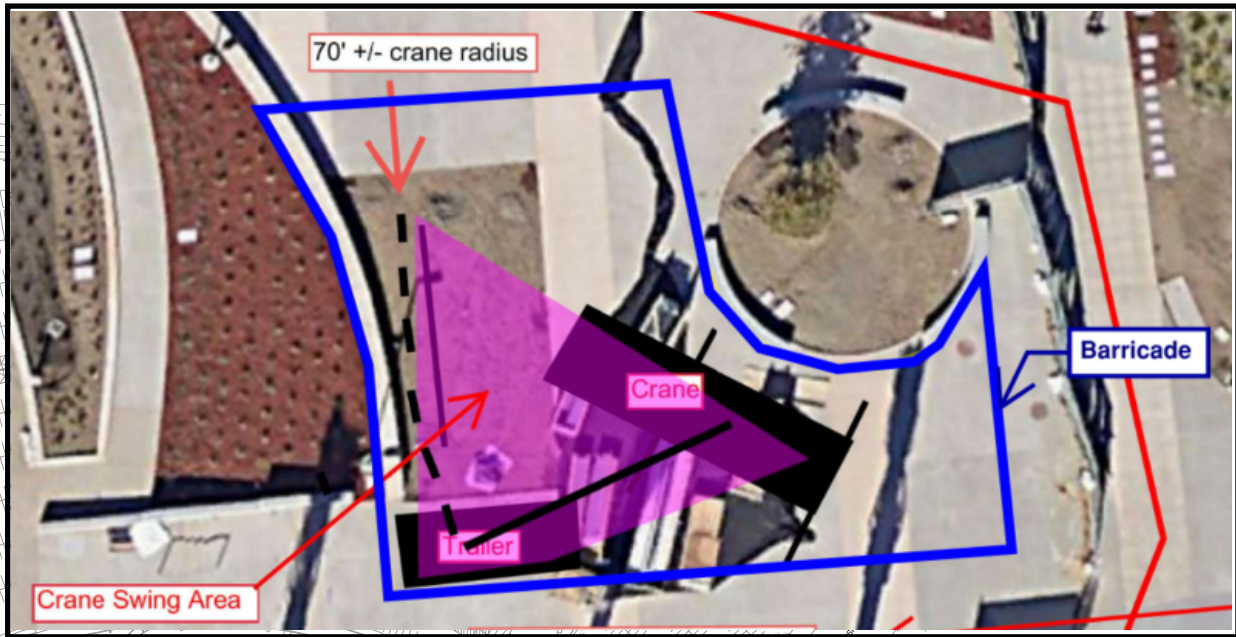
Brian Shively, MC Administrative Services, Program Specialist
Brian.Shively@missioncollege.edu
(408) 855-5289

Danny Nguyen, MC VP of Administrative Services
Danny.Nguyen@missioncollege.edu
(408) 855-5417

For more information regarding the Capital Improvement Program, please visit the Campus Construction Update page at: <https://wvm.edu/services/construction/Pages/default.aspx>



MC IP Monument Sign Project
Monument Sign Installation
Monday 5/16/22 through Wednesday 5/18/22 (from 7:00 AM to 6:00 PM)



70' +/- crane radius

Crane Swing Area

Crane

Trailer

Barricade

Area of work