

# **CONSTRUCTION NOTICE** **MISSION COLLEGE CAMPUS**



**PROJECT NAME:** Mission College – Interdisciplinary Plaza Monument Sign

**ACTIVITY DESCRIPTION:** Sign Installation

**SCHEDULE:** Monday 4/25/22 to Monday 5/2/22 (from 7:00 AM to 6:00 PM)

**CAMPUS IMPACT:** SEE ATTACHED MAP

The general contractor will be using a crane to install the Monument Sign starting on Monday, 4/25/22. The Work will be enclosed within the construction barricade.

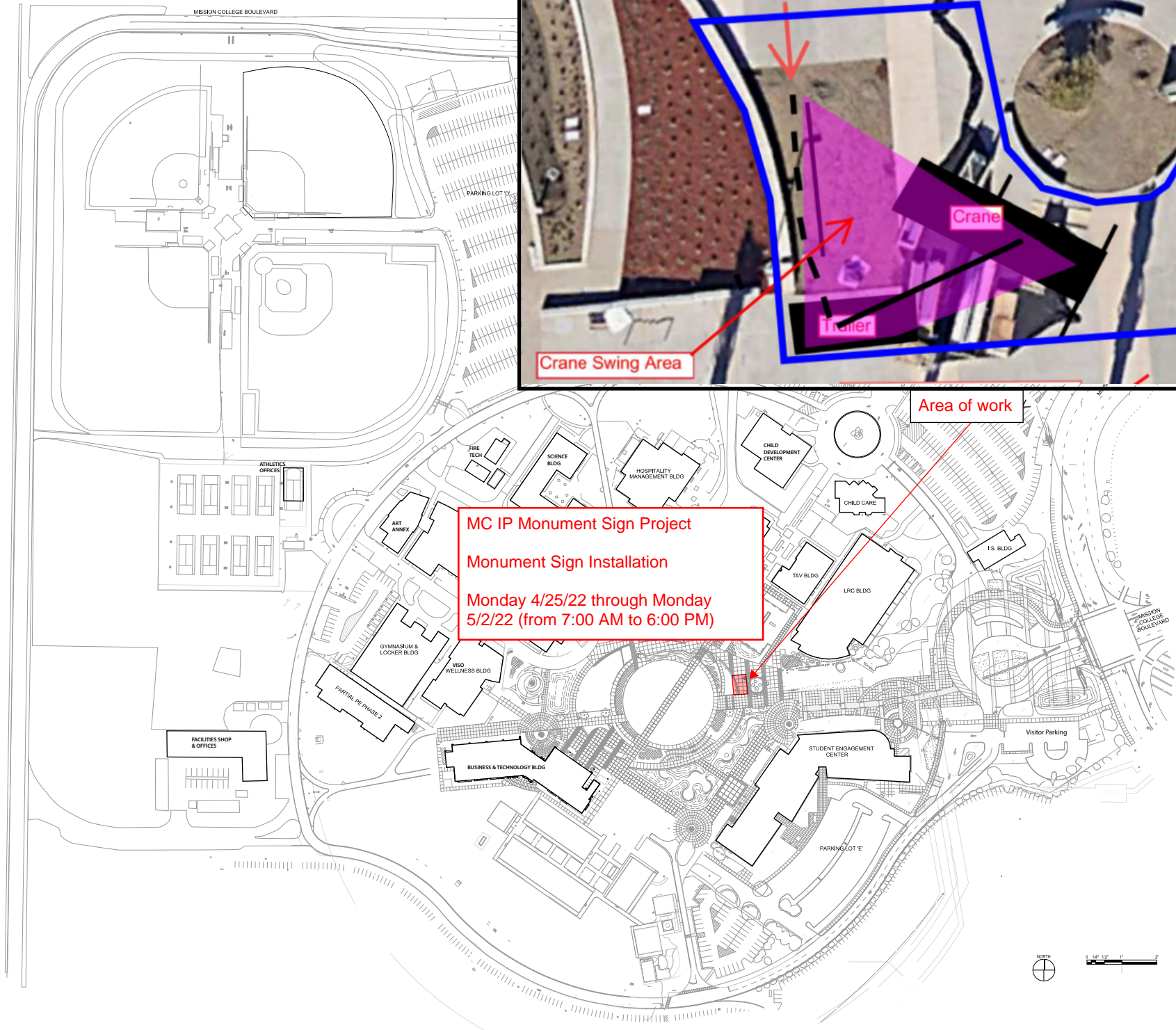
Moderate noise and vibration impacts are expected during this Work, which will be confined within the crane swing area. Pedestrian pathways will always be accessible.

**PROJECT CONTACT:** Nini Reyes-Bolinger, MC Facilities Project Analyst  
[Nini.Reyes-Bolinger@wvm.edu](mailto:Nini.Reyes-Bolinger@wvm.edu)  
(408) 855-5134

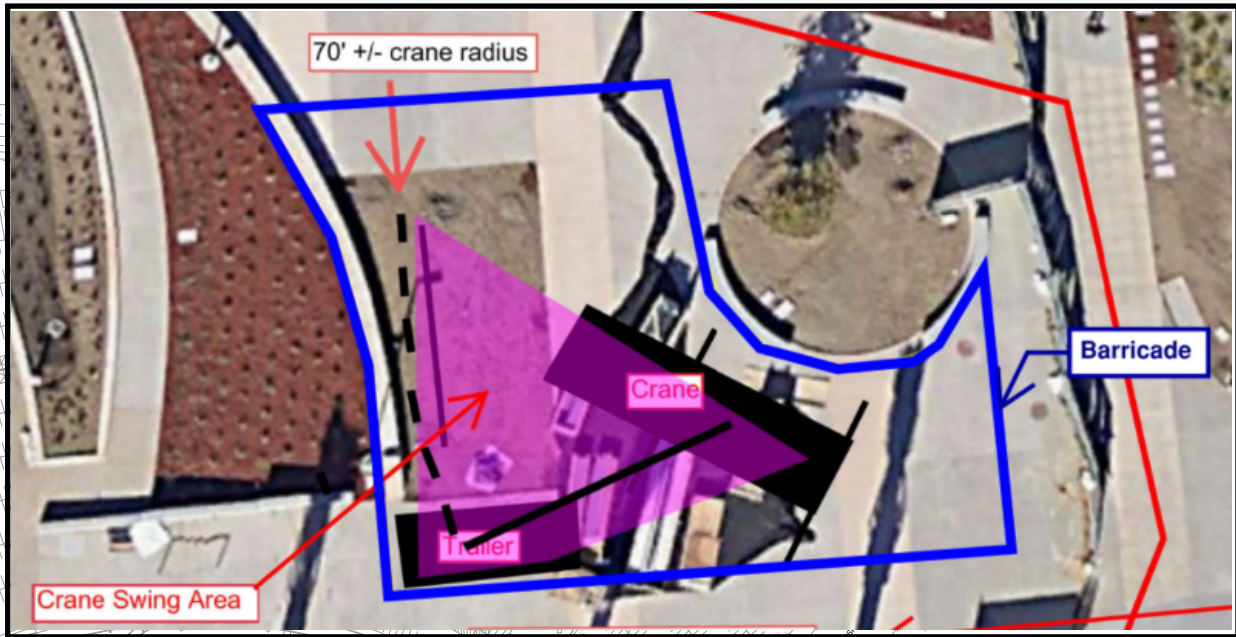
Brian Shively, MC Administrative Services, Program Specialist  
[Brian.Shively@missioncollege.edu](mailto:Brian.Shively@missioncollege.edu)  
(408) 855-5289

Danny Nguyen, MC VP of Administrative Services  
[Danny.Nguyen@missioncollege.edu](mailto:Danny.Nguyen@missioncollege.edu)  
(408) 855-5417

For more information regarding the Capital Improvement Program, please visit the Campus Construction Update page at: <https://wvm.edu/services/construction/Pages/default.aspx>



**MC IP Monument Sign Project**  
**Monument Sign Installation**  
**Monday 4/25/22 through Monday 5/2/22 (from 7:00 AM to 6:00 PM)**



Area of work

