

# **CONSTRUCTION NOTICE** **MISSION COLLEGE CAMPUS**



**PROJECT NAME:** Mission College Interdisciplinary Plaza

**ACTIVITY DESCRIPTION:** Gas Service Shutdown for Locker Rooms and Viso Sports Complex

**SCHEDULE:** Monday, July 27, 2020 through Friday, September 25, 2020

**CAMPUS IMPACT:** SEE ATTACHED WORK PLAN

Gas services for the Locker Rooms and Viso Sports Complex will be shut down beginning on 7/27/2020. The gas shutdown will affect the Locker Rooms and Viso Sports Complex.

The date of gas restoration is COB 9/25/2020.

High noise impacts are expected.

**PROJECT CONTACT:** Nini Reyes-Bolinger, MC Facilities Project Analyst  
[Nini.Reyes-Bolinger@wvm.edu](mailto:Nini.Reyes-Bolinger@wvm.edu)  
(408) 855-5134

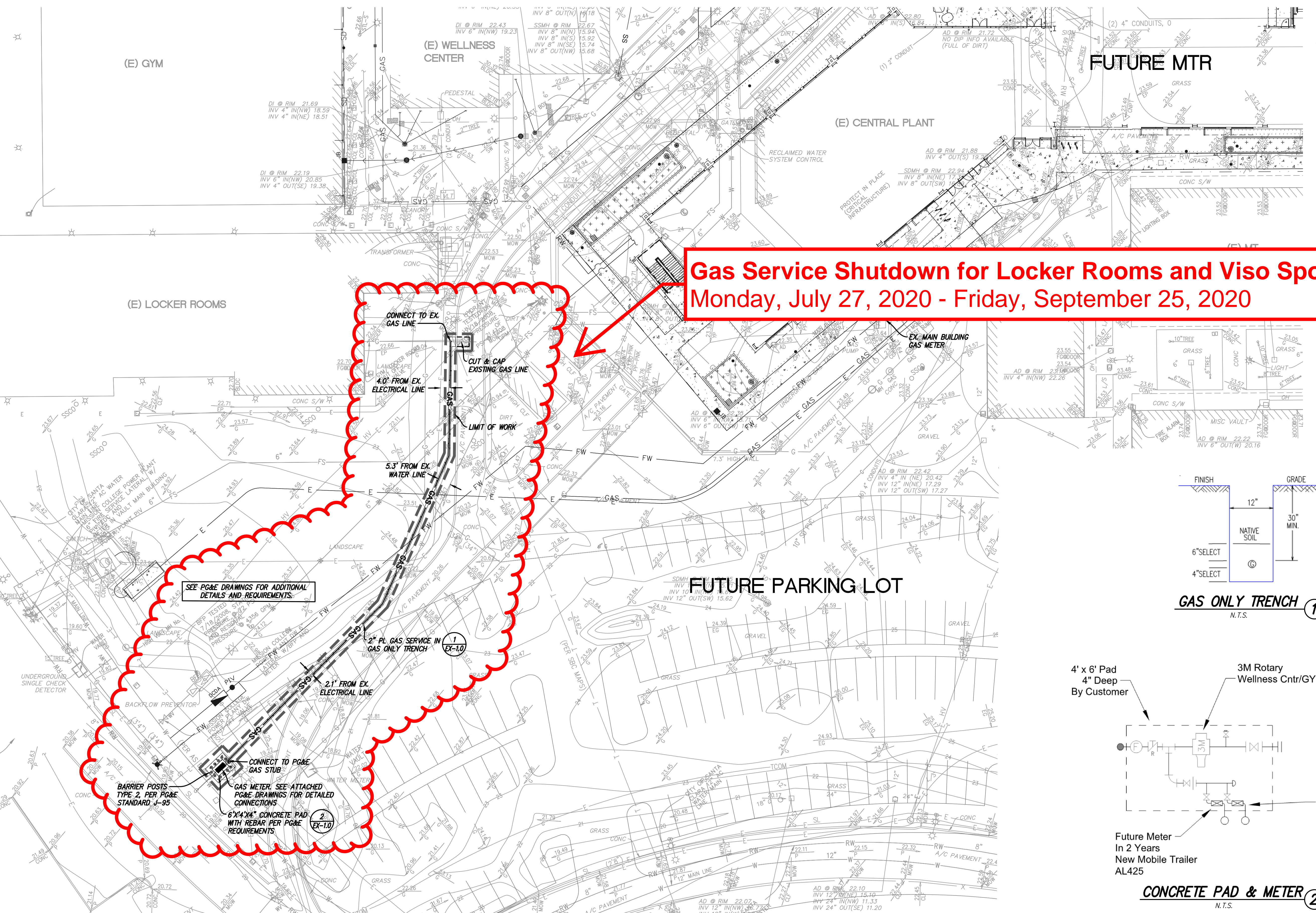
Susan Rittel, MC Director of Facilities Construction  
[Susan.Rittel@wvm.edu](mailto:Susan.Rittel@wvm.edu)  
(408) 855-5043

Brian Shively, MC Administrative Services, Program Specialist  
[Brian.Shively@missioncollege.edu](mailto:Brian.Shively@missioncollege.edu)  
(408) 855-5289

Danny Nguyen, MC VP of Administrative Services  
[Danny.Nguyen@missioncollege.edu](mailto:Danny.Nguyen@missioncollege.edu)  
(408) 855-5417

**For more information regarding the Capital Improvement Program, please visit the Campus Construction Update page at: <https://wvm.edu/services/construction/Pages/default.aspx>**

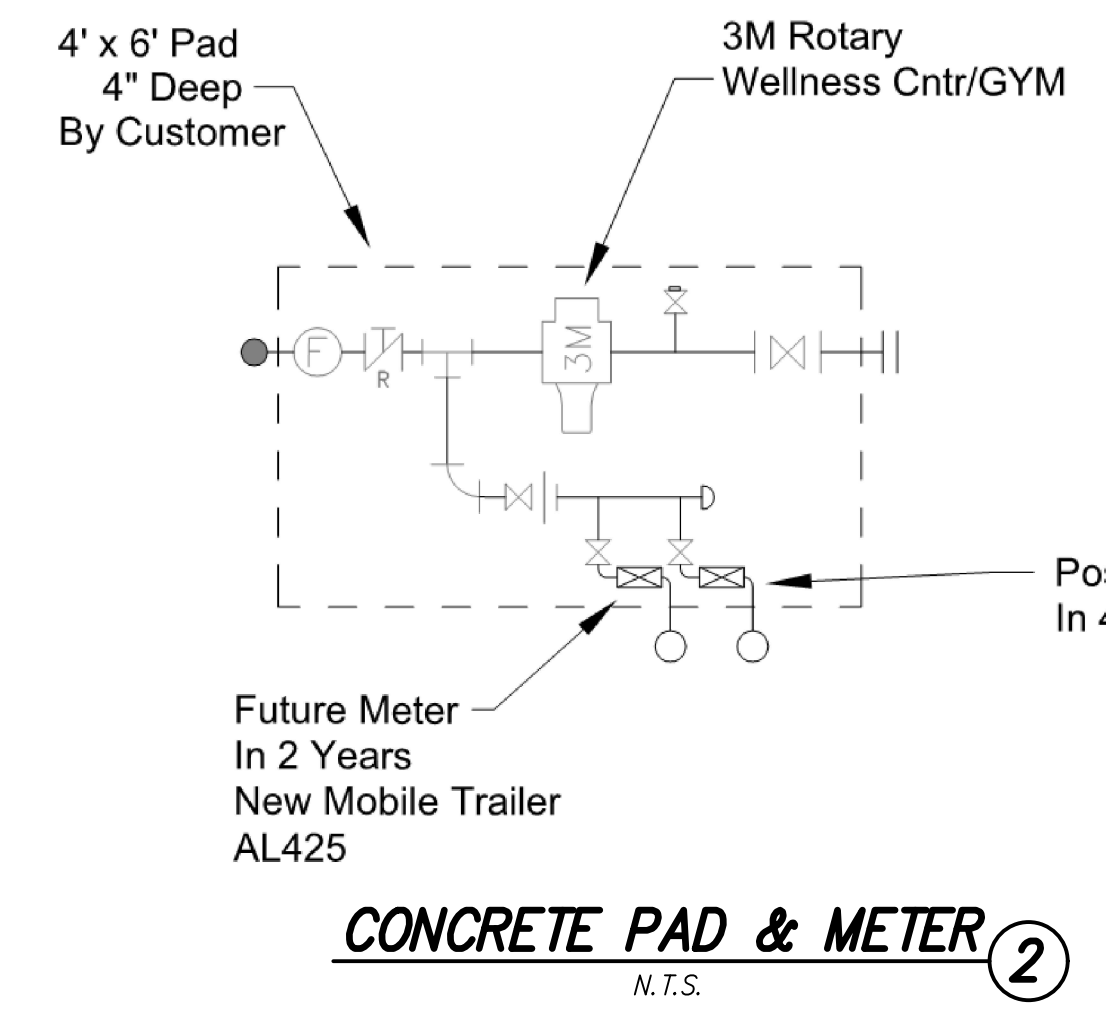
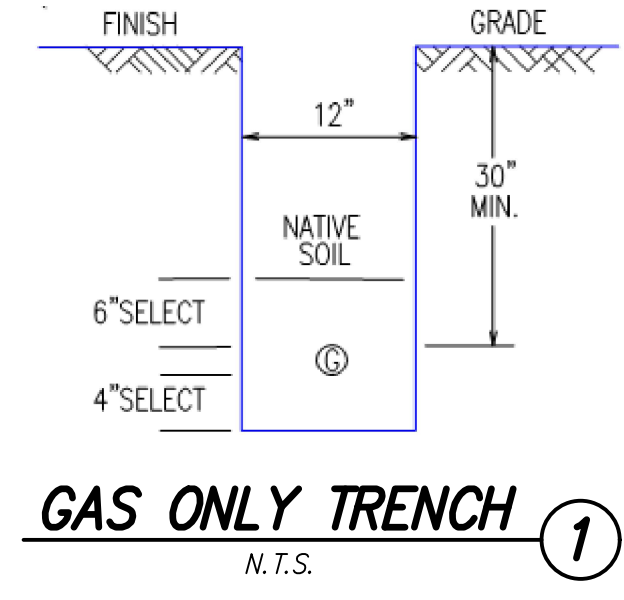
NO PART OF THIS DOCUMENT MAY BE REPRODUCED IN ANY FORM INCLUDING PHOTOCOPY, RECORDING OR ANY INFORMATION RETRIEVABLE AND STORAGE SYSTEM, WITHOUT PERMISSION IN WRITING FROM SANDIS.



**Gas Service Shutdown for Locker Rooms and Viso Sports Complex**  
Monday, July 27, 2020 - Friday, September 25, 2020

**LEGEND**

- ASPHALT CONCRETE PAVING
- CONCRETE PAVING
- LANDSCAPE AREA
- LIMIT OF WORK LINE
- SAWCUT LINE



**SANDIS** CIVIL ENGINEERS SURVEYORS PLANNERS

1700 S. Winchester Blvd, Suite 200, Campbell, CA 95008 | P. 408.636.0900 | F. 408.636.0999 | www.sandis.net

SILICON VALLEY TRI-VALLEY CENTRAL VALLEY SACRAMENTO EAST BAY/SF

DATE:	01/07/19
SCALE:	1"=20'
DRAWN BY:	DD
APPROVED BY:	SY
DRAWING NO.:	216032

No.	REVISION/ISSUE	DATE	BY

**NEW GAS METER LOCATION**

**MISSION COLLEGE MCIP**  
SANTA CLARA CALIFORNIA

SHEET **EX-1.0**  
OF 1 SHEETS