

# **CONSTRUCTION NOTICE** **MISSION COLLEGE CAMPUS**



**PROJECT NAME:** Mission College Interdisciplinary Plaza

**ACTIVITY DESCRIPTION:** Fire Water Hot Tap

**SCHEDULE:** Tuesday, March 31, 2020

**CAMPUS IMPACT:** SEE ATTACHED PLAN FOR AREA OF WORK

Contractor will be hot tapping into the existing fire water line between the Sciences and HM Buildings on Tuesday, March 31, 2020 from 8:00 AM – 12:00 PM.

Hot tapping machine will be used to drill through the existing fire water line. Minimal noise and vibration impact are expected. Work to occur within current construction fencing area.

**PROJECT CONTACT:** Nini Reyes-Bolinger, MC Facilities Project Analyst  
[Nini.Reyes-Bolinger@wvm.edu](mailto:Nini.Reyes-Bolinger@wvm.edu)  
(408) 855-5134

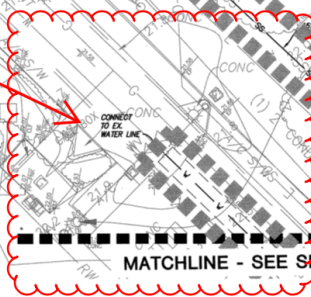
Susan Rittel, MC Director of Facilities Construction  
[Susan.Rittel@wvm.edu](mailto:Susan.Rittel@wvm.edu)  
(408) 855-5043

Danny Nguyen, MC VP of Administrative Services  
[Danny.Nguyen@missioncollege.edu](mailto:Danny.Nguyen@missioncollege.edu)  
(408) 855-5417

HOSPITALITY  
MANAGEMENT

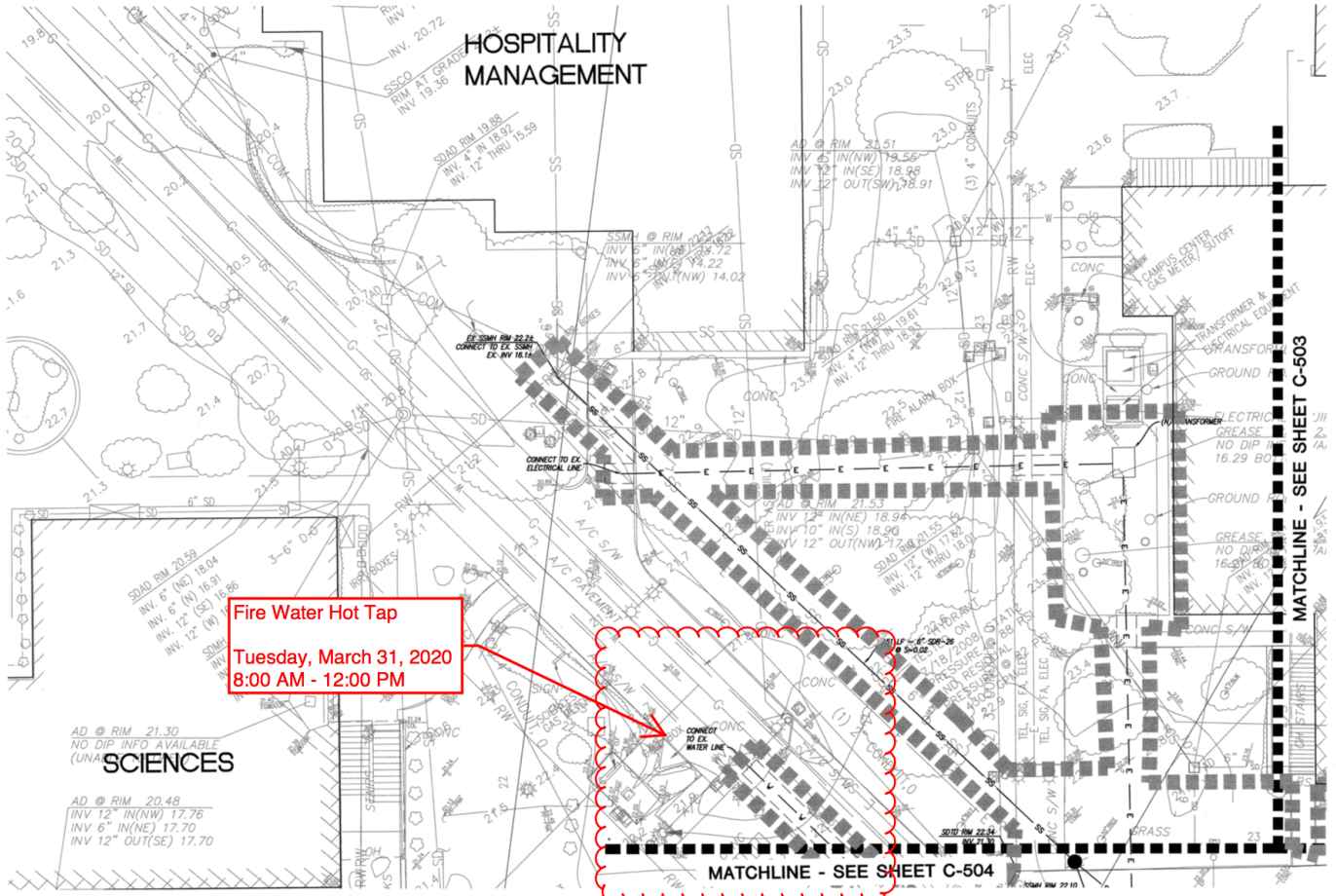
SCIENCES

Fire Water Hot Tap  
Tuesday, March 31, 2020  
8:00 AM - 12:00 PM



MATCHLINE - SEE SHEET C-504

MATCHLINE - SEE SHEET C-503



AD @ RIM 21.30  
NO DIP INFO AVAILABLE  
(UNAVAILABLE)  
INV 12" IN(NW) 17.76  
INV 6" IN(NE) 17.70  
INV 12" OUT(SE) 17.70

SDAD RIM 20.59  
INV 6" (NO) 18.04  
INV 12" (SE) 16.86  
INV 12" (W) 16.86

SSAD RIM 19.88  
INV 4" (N) 18.92  
INV 12" THRU 15.59

AD @ RIM 21.51  
INV 6" IN(NW) 19.56  
INV 12" IN(SE) 18.98  
INV 12" OUT(SW) 17.91

SSAD @ RIM 20.29  
INV 6" IN(NE) 19.72  
INV 6" IN(S) 14.22  
INV 12" IN(NW) 14.02

AD @ RIM 21.53  
INV 12" IN(NE) 18.94  
INV 10" IN(S) 18.90  
INV 12" OUT(NW) 17.91

AD @ RIM 21.53  
INV 12" IN(NE) 18.94  
INV 10" IN(S) 18.90  
INV 12" OUT(NW) 17.91

AD @ RIM 21.53  
INV 12" IN(NE) 18.94  
INV 10" IN(S) 18.90  
INV 12" OUT(NW) 17.91

AD @ RIM 21.53  
INV 12" IN(NE) 18.94  
INV 10" IN(S) 18.90  
INV 12" OUT(NW) 17.91

AD @ RIM 21.53  
INV 12" IN(NE) 18.94  
INV 10" IN(S) 18.90  
INV 12" OUT(NW) 17.91