

CONSTRUCTION NOTICE **MISSION COLLEGE CAMPUS**



PROJECT NAME: Mission College MC PV Solar Panel

ACTIVITY DESCRIPTION: Mark The Locations For USA Clearance On Parking Lot A & B

SCHEDULE: **Friday 2/7/2020**

CAMPUS IMPACT: SEE ATTACHED PLAN OF PARKING LOT A & B

Mark the location for USA clearance on Friday 2/7/202 from 6:00 AM to 3:00 PM. No noise impact is expected.

PROJECT CONTACT: Rosa Huynh, MC Administrative Specialist
Rosa.Huynh@wvm.edu
(408) 855-5425

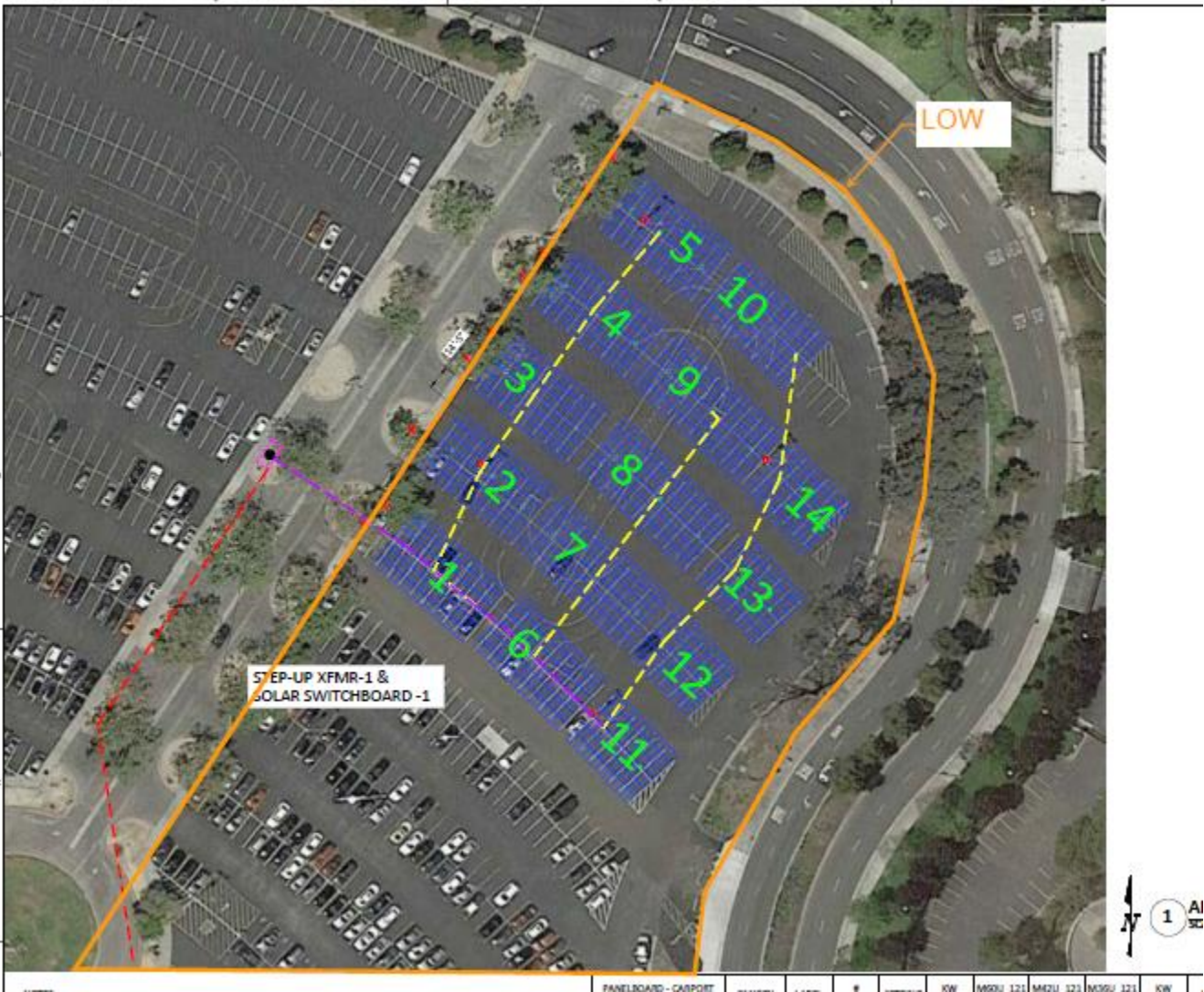
Nini Reyes-Bolinger, MC Facilities Project Analyst
Nini.Reyes-Bolinger@wvm.edu
(408) 855-5134

Susan Rittel, MC Director of Facilities Construction
Susan.Rittel@wvm.edu
(408) 855-5043

Danny Nguyen, MC VP of Administrative Services
Danny.Nguyen@missioncollege.edu
(408) 855-5417

For more information regarding the Capital Improvement Program, please visit the Campus Construction Update page at: <http://www.wvm.edu/facilities/>

Lot A



Lot B



| PANEL BOARD - CARPORT LOT B | CANOPY LABEL | # MODULE | # STRING | VW (DC) | M30U_121 (21 STR) | M30U_121 (18 STR) | M30U_121 (15 STR) | M30U_121 (12 STR) | M30U_121 (9 STR) | M30U_121 (6 STR) | M30U_121 (4 STR) | I |
|-----------------------------|--------------|----------|----------|---------|-------------------|-------------------|-------------------|-------------------|------------------|------------------|------------------|---|
| SPB04 | 15 | 4x15 | 6 | 28.20 | | | | | | 1 | | 1 |
| | 16 | 4x15 | 6 | 28.20 | | | | | | 1 | | 1 |
| | 17 | 4x30 | 4 | 58.80 | | | | | | | 1 | 1 |
| | 18 | 6x20 | 12 | 56.40 | | | | 1 | | | | |
| SPB05 | 19 | 6x20 | 12 | 56.40 | | | | 1 | | | | |
| | 20 | 6x20 | 12 | 56.40 | | | | 1 | | | | |
| | 21 | 6x25 | 15 | 70.50 | | | | 1 | | | | |
| SPB06 | 22 | 6x15 | 9 | 42.30 | | | | | 1 | | | 1 |
| | 23 | 6x30 | 18 | 84.60 | | 1 | | | | | | |
| SPB07 | 24 | 6x30 | 18 | 84.60 | | 1 | | | | | | |
| | 25 | 6x35 | 21 | 98.70 | 1 | | | | | | | |
| | 26 | 6x35 | 21 | 98.70 | 1 | | | | | | | |
| SPB07 | 27 | 6x30 | 18 | 84.60 | | 1 | | | | | | |
| | 28 | 6x30 | 18 | 84.60 | | 1 | | | | | | |

NOTES:
 1. 110 MPH WIND ZONE (ASCE 7-10) CATEGORY II, EXPOSURE C
 2. PERMITTED BY CITY OF...