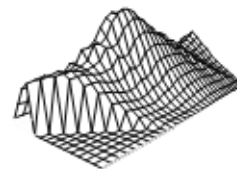


# Post-2020 Census Redistricting: Orientation

WEST VALLEY MISSION COMMUNITY COLLEGE DISTRICT  
LEGISLATIVE AND POLICY OVERSIGHT COMMITTEE  
OCTOBER 27, 2021

---



Shelley Lapkoff, Ph.D. & Jeanne Gobalet, Ph.D.  
LAPKOFF & GOBALET DEMOGRAPHIC RESEARCH, INC.

[www.demographers.com](http://www.demographers.com)

Oakland and Saratoga, California

# #1 Legal Priority when Redistricting: Population Equality

Trustee Areas (TAs) need to be proportional in population to the number of trustees representing the TA.

**Ideal District (TA) population** =  $1/7$  of the 2020 Census population, multiplied by the number of trustees representing that TA:

CLPCCD= 467,084 total population;  $1/7= 66,726$

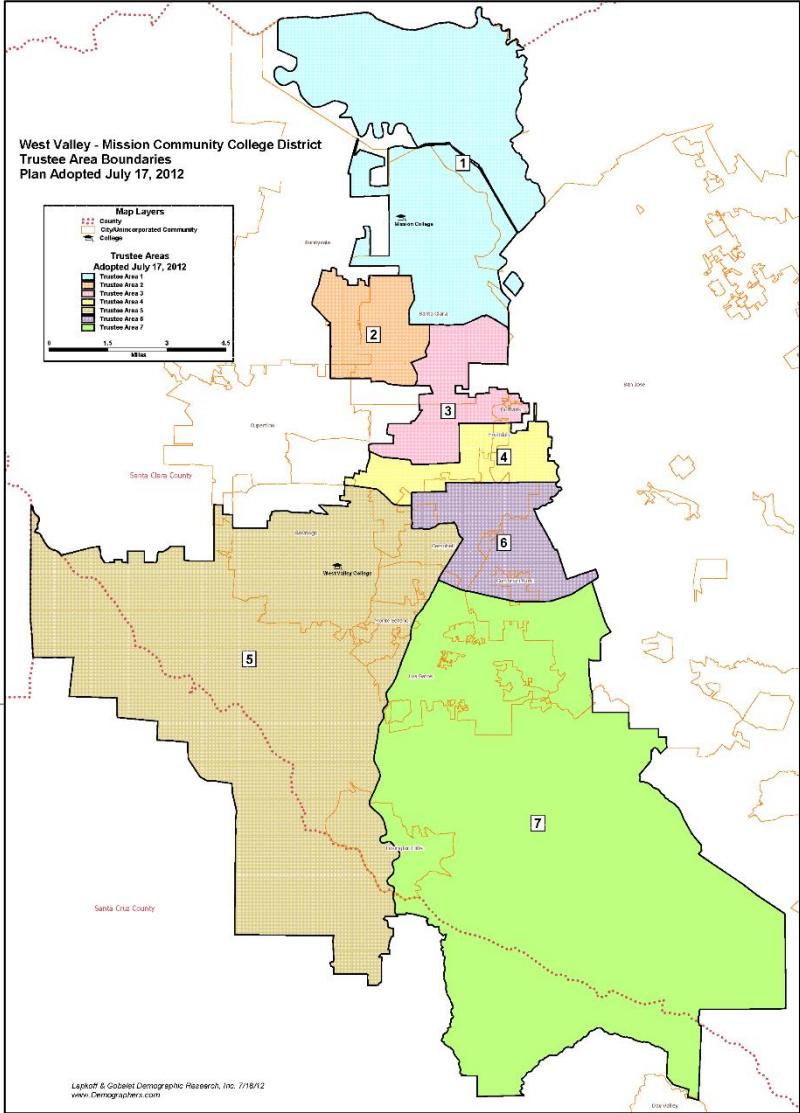
**Plan deviation** = Difference between the least and most populous districts, divided by the ideal District population

Up to **10%** deviation is permitted = 6,673 persons

# ***WVMCCD's current Trustee Area 2020 populations are NOT balanced, so the boundaries need to be adjusted.***

<b>WVMCCD Current Plan - Population Balance</b>			
<b>District</b>	<b>2020 Population</b>	<b>Deviation</b>	<b>% Deviation</b>
1	80,318	13,592	20.4%
2	68,072	1,346	2.0%
3	67,563	837	1.3%
4	60,505	-6,221	-9.3%
5	63,330	-3,396	-5.1%
6	63,625	-3,101	-4.6%
7	63,671	-3,055	-4.6%
<b>Total</b>	<b>467,084</b>		
	<b>Deviation</b>	<b>19,813</b>	<b>29.7%</b>
<b>66,726</b>	<b>Ideal Population for Trustee Area</b>		

*Using official redistricting data (2020 Census data adjusted by California's Statewide Database for inmate populations)*



# Questions?

---