

**ADDENDUM #1**

**FOR**

**APPLIED ARTS & SCIENCES  
ROOF SCREEN PROJECT**

**AT**

**WEST VALLEY COLLEGE**

Owner

West Valley-Mission Community College District  
Saratoga, California

**Bid #25-1617**

**05-25-17**

WEST VALLEY-MISSION COMMUNITY COLLEGE DISTRICT  
14000 Fruitvale Avenue  
Saratoga, CA 95070

Bid #25-1617

APPLIED ARTS & SCIENCES – ROOF SCREEN PROJECT  
WEST VALLEY COLLEGE

BID ADDENDUM #1  
CONSISTS OF THE  
FOLLOWING

1. ACKNOWLEDGEMENT
2. DESCRIPTION OF CHANGES

Bidders sign and return one copy of this addendum with your bid.  
Failure to do so may subject bidder to disqualification.

The Bid Addendum #1 supersedes and modifies portions of the bid and contract documents issued by the District for Bids listed above for Applied Arts & Sciences Roof Screen Project at West Valley College.

Brigit Espinosa  
Director, General Services  
(408)741-2187

Date: \_\_\_\_\_

Company Name: \_\_\_\_\_

Signed By: \_\_\_\_\_

Printed Name: \_\_\_\_\_

Phone/Fax: \_\_\_\_\_

Email: \_\_\_\_\_



## ADDENDUM NO. 01

May 24, 2017

**TO THE CONTRACT DOCUMENTS FOR  
WEST VALLEY APPLIED ARTS & SCIENCES RENOVATION  
1400 Fruitvale Blvd, Saratoga CA 95070  
FOR THE  
WEST VALLEY MISSION COMMUNITY COLLEGE DISTRICT  
DSA A# 01-116396 – FILE NO. 43-C3**

### NOTICE TO BIDDERS

This Addendum forms a part of the Contract and modifies the original bidding documents dated March 28, 2017. It is intended that all work affected by the following modifications shall conform to related provisions and general conditions of the Contract of the original drawings and specifications. Modify the following items wherever appearing in any drawings or sections of the specifications. Acknowledge receipt of Addendum No. 01 in the space provided on the Bid Form. Failure to do so may subject to disqualification.

### CHANGES TO DRAWINGS

- ITEM NO. 01** Sketch M-1  
Refer to newly issued sketch M-1. Contractor to remove and replace existing supply air duct and diffuser in Classroom 125, served by AH-23A, with new 24" supply duct and new 24" Price Industries Model RCD supply air diffuser, similar to installation in Classroom 123.
- ITEM NO. 02** Sketch M-2  
Refer to newly issued sketch M-2. Contractor to reprogram supply fan variable frequency drive (VFD) for AH-23A. Program maximum VFD speed to 60 HZ.
- ITEM NO. 02** Adjust EMS set points for AH-23A  
Coordinate with college facilities staff to establish fan set points for AH-23A via the existing building EMS. Recommended set points are below. Revise set points as required based on acoustics and thermal performance.
- Supply Fan Low Speed – 80%
  - Supply Fan High Speed – 100%
  - Relief Fan Low Speed – 0%
  - Relief Fan High Speed – 80%

END OF ADDENDUM NO. 01



Sketch	Revision
	<b>M-1</b>
Job. No. 12024.20	Description ADDENDUM 01: FLOOR PLAN UPDATE
Reference	
Date 5/24/17	
Scale 1/8" = 1'-0"	

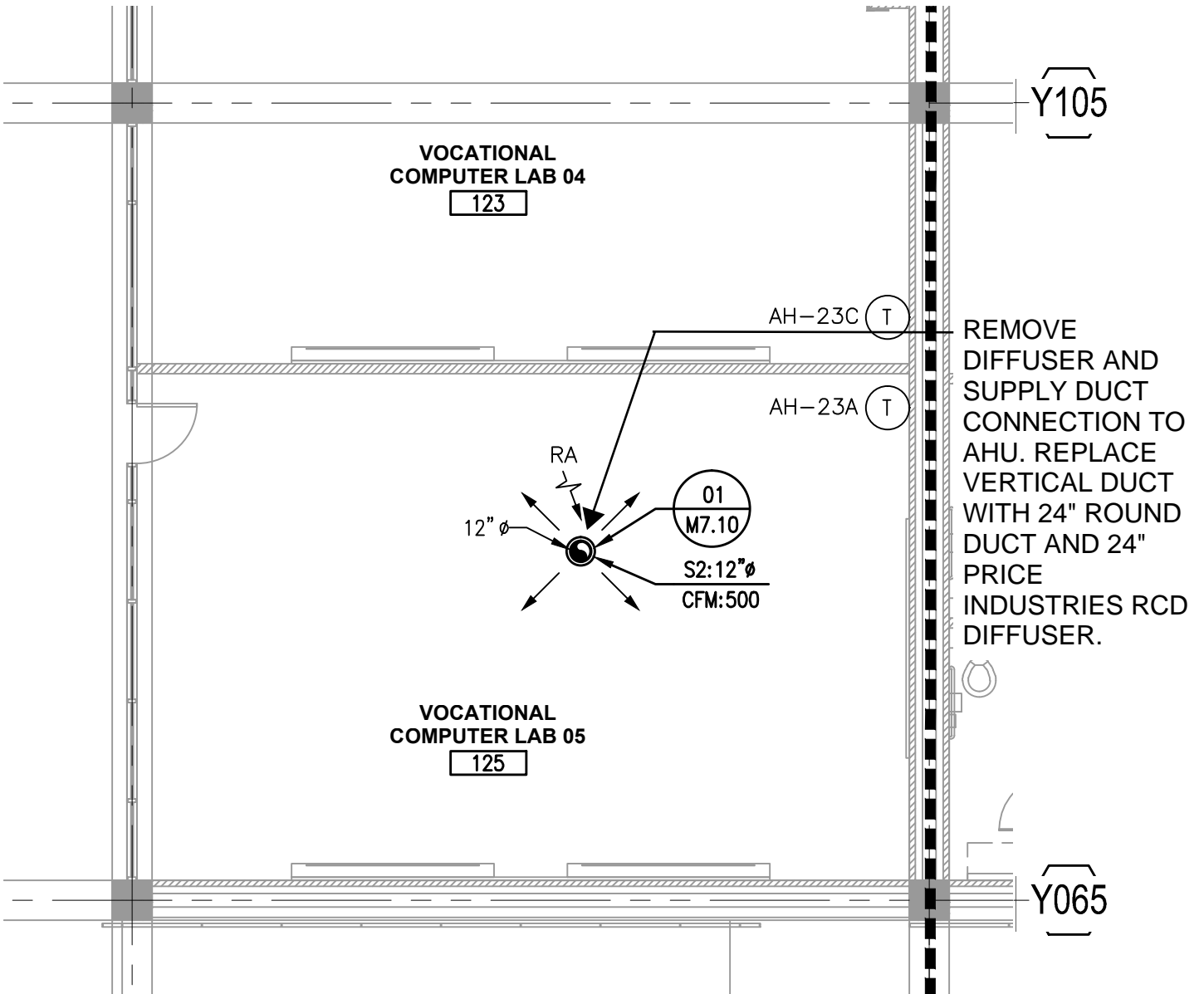
**LPA**

p. 949.261.1001 f. 949.260.1190  
w. lpainc.com e. info@lpainc.com

5161 California Avenue, Suite 100  
Irvine, California 92617

**West Valley College  
Applied Arts & Sciences Roof  
Screen**

14000 Fruitvale Avenue  
Saratoga, CA 95070  
© Copyright 2017



Sketch	Revision
	<b>M-2</b>
Job. No. 12024.20	Description
Reference	ADDENDUM 01: ROOF PLAN CONTROL UPDATE
Date 5/24/17	
Scale 1/8" = 1'-0"	

**LPA**

p. 949.261.1001 f. 949.260.1190  
w. lpainc.com e. info@lpainc.com

5161 California Avenue, Suite 100  
Irvine, California 92617

### West Valley College Applied Arts & Sciences Roof Screen

14000 Fruitvale Avenue  
Saratoga, CA 95070  
© Copyright 2017

